



OVERLOAD RELAY, 4.5...6.3 A, 1NO+1NC,
SIZE S0, CLASS 10,
FOR CONTACTOR MOUNTING

General technical details:

| | | |
|---|----|------------------------|
| Product brand name | | SIRIUS |
| Product designation | | thermal overload relay |
| Protection class IP / frontal/front side | | IP20 |
| Insulation voltage / with degree of pollution 3 / rated value | V | 690 |
| Altitude of installation site / at a height over sea level / maximum | m | 2,000 |
| Ambient temperature | | |
| • during the operating phase | °C | -20 ... 70 |
| • during storage | °C | -55 ... 80 |
| • during transport | °C | -55 ... 80 |
| Relative humidity / during the operating phase / maximum | % | 100 |
| Resistance against shock | | 8g / 10 ms |
| Impulse voltage resistance / rated value | kV | 6 |
| Real loss power / total / typical | W | 6 |
| Item designation | | |
| • according to DIN 40719 extendable after IEC 204-2 / according to IEC 750 | | F |
| • according to DIN EN 61346-2 | | F |
| Operating current / of the fuse link / rated value | A | 20 |
| Trip class | | CLASS 10 |

| | | |
|--|--|-------------------|
| Type of assignment | | 2 |
| Type of protection | | DMT 98 ATEX G 001 |
| Size of overload relay | | S0 |
| Size of the contactor / can be combined / company-specific | | S0 |
| Protection against electrical shock | | finger-safe |

Main circuit:

| | | |
|---|----|-------------|
| Number of poles / for main current circuit | | 3 |
| Operating voltage / at 3 AC / rated value | | |
| • maximum | V | 690 |
| Service power / at AC-3 | | |
| • at 400 V | kW | 2.2 |
| Adjustable response current | | |
| • of the current-dependent overload release | A | 4.5 ... 6.3 |

Auxiliary circuit:

| | | |
|--|---|--|
| Contact reliability / of the auxiliary contacts | | acceptability for PLC control (17 V, 5 mA) |
| Number of NC contacts | | 1 |
| Number of NO contacts | | 1 |
| Number of change-over switches | | 0 |
| Operating current / of the auxiliary contacts / at AC-15 | | |
| • at 24 V | A | 3 |
| • at 110 V | A | 3 |
| • at 120 V | A | 3 |
| • at 125 V | A | 3 |
| • at 230 V | A | 2 |
| • at 400 V | A | 1 |
| Operating current / of the auxiliary contacts / at DC-13 | | |
| • at 24 V | A | 1 |
| • at 110 V | A | 0.22 |
| • at 125 V | A | 0.22 |
| • at 220 V | A | 0.11 |

Short-circuit:

| | | |
|---|--|------------------------------|
| Design of the fuse link / for short-circuit protection of the auxiliary switch / required | | fuse gL/gG: 6 A, quick: 10 A |
|---|--|------------------------------|

Installation/mounting/dimensions:

| | | |
|-------------------------|--|---|
| built in orientation | | with vertical mounting surface +/-135° rotatable, with vertical mounting surface +/- 45° tiltable to the front and back |
| Type of fixing/fixation | | direct mounting |

| | | |
|--|----|----|
| Height | mm | 97 |
| Width | mm | 45 |
| Depth | mm | 96 |
| distance, to be maintained, to the ranks assembly | | |
| • upwards | mm | 0 |
| • downwards | mm | 0 |
| • forwards | mm | 0 |
| • backwards | mm | 0 |
| • sideways | mm | 0 |
| distance, to be maintained, to earthed part | | |
| • upwards | mm | 0 |
| • downwards | mm | 0 |
| • forwards | mm | 0 |
| • backwards | mm | 0 |
| • sideways | mm | 6 |
| distance, to be maintained, conductive elements | | |
| • upwards | mm | 0 |
| • downwards | mm | 0 |
| • forwards | mm | 0 |
| • backwards | mm | 0 |
| • sideways | mm | 6 |

Connection type:

| | | |
|--|--|--|
| Product function | | |
| • removable terminal for auxiliary and control circuit | | No |
| design of the electrical connection | | |
| • for main current circuit | | screw-type terminals |
| • for auxiliary and control current circuit | | screw-type terminals |
| Type of the connectable conductor cross-section | | |
| • for main contacts | | |
| • unifilar | | 2 x (1 ... 2.5 mm ²), 2 x (2.5 ... 6 mm ²), max. 2 x (2.5 ... 10 mm ²) |
| • stranded wire | | 2 x (1 ... 2.5 mm ²), 2 x (2.5 ... 6 mm ²), max. 2 x (2.5 ... 10 mm ²) |
| • stranded wire | | |
| • with conductor end processing | | 2x (1 ... 2.5 mm ²), 2x (2.5 ... 6 mm ²) |
| • for auxiliary contacts | | |
| • solid | | 2x (0.5 ... 1.5 mm ²), 2x (0.75 ... 2.5 mm ²) |
| • finely stranded | | |
| • with wire end processing | | 2x (0.5 ... 1.5 mm ²), 2x (0.75 ... 2.5 mm ²) |
| • without conductor final cutting | | 2x (0,5 ... 1,5 mm ²), 2x (0,75 ... 2,5 mm ²) |

| | | |
|--|-----------------|----------------|
| <ul style="list-style-type: none"> • at AWG-conductors • for main contacts • for auxiliary contacts | | 2x (14 ... 10) |
| | | 2x (18 ... 14) |
| Conductor cross section that can be connected | | |
| <ul style="list-style-type: none"> • for main contacts <ul style="list-style-type: none"> • unifilar • stranded wire • stranded wire <ul style="list-style-type: none"> • with conductor end processing • for auxiliary contact <ul style="list-style-type: none"> • unifilar • stranded wire <ul style="list-style-type: none"> • with conductor end processing • without conductor final cutting | mm ² | 1 ... 10 |
| | mm ² | 1 ... 10 |
| | mm ² | 1 ... 6 |
| | mm ² | 0.5 ... 2.5 |
| | mm ² | 0.5 ... 2.5 |
| | mm ² | 0.5 ... 2.5 |
| AWG number / as coded connectable conductor cross-section | | |
| <ul style="list-style-type: none"> • for main contacts / minimum • for auxiliary contact | | 14 |
| | | 18 ... 14 |

Certificates/approvals:

| | |
|------------------------------------|---|
| verification of suitability | CSA / UL / CC / GL / LRS / BV / DNV / RMRS / RINA / PRS / ABS |
| varification of suitability / ATEX | Yes |

Further information:

Information- and Downloadcenter (Catalogs, Brochures,...)

<http://www.siemens.com/industrial-controls/catalogs>

Global Industry Mall (Online ordering system)

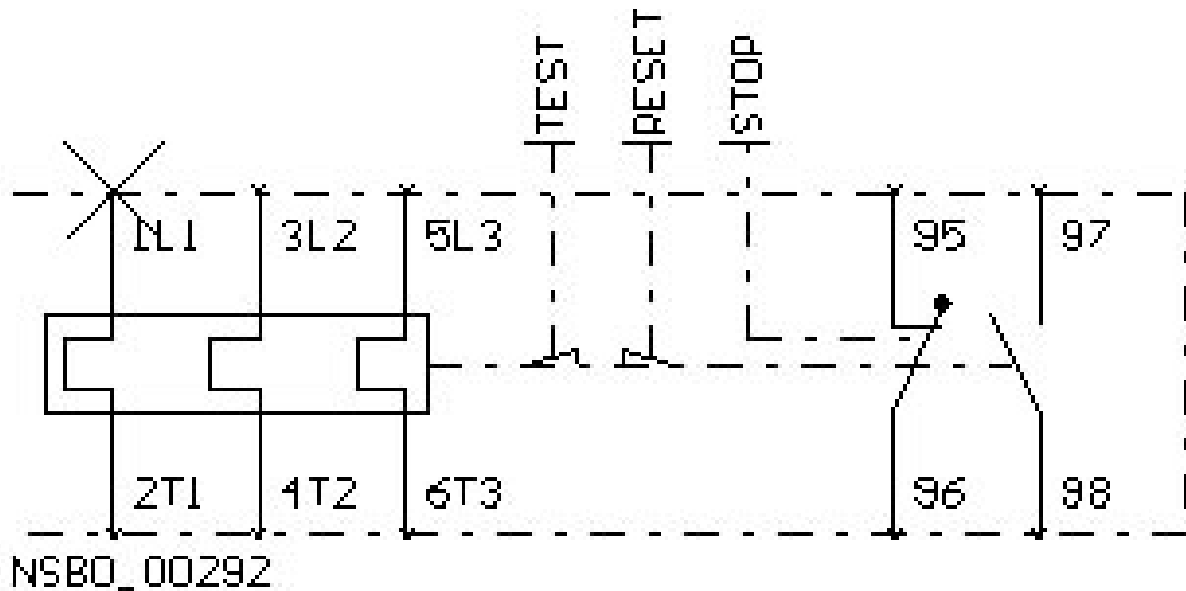
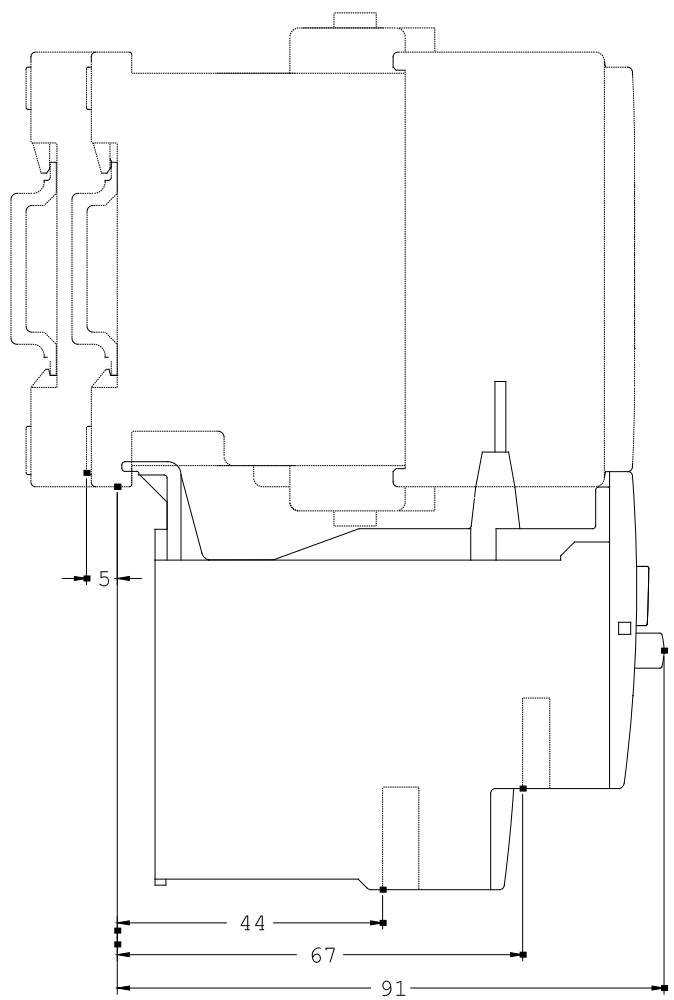
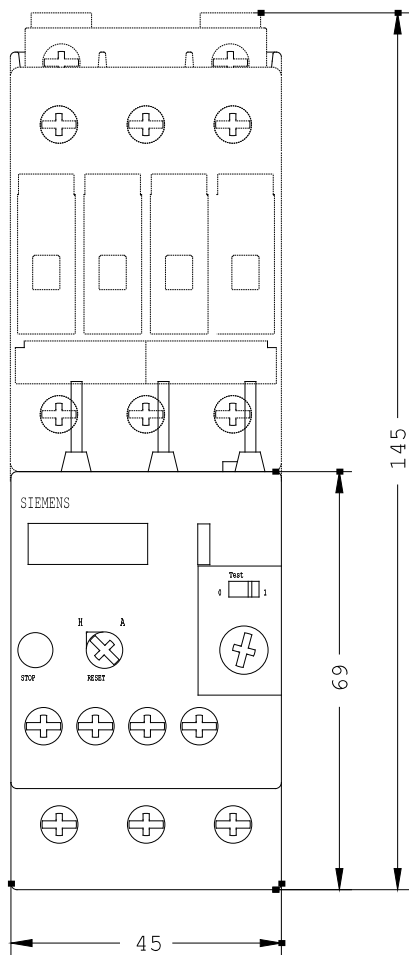
<http://www.siemens.com/industrial-controls/mall>

Service&Support (Manuals, Certificates, Characteristics, FAQs,...)

<http://support.automation.siemens.com/WW/view/en/3RU1126-1GB0/all>

Image database (product images, 2D dimension drawings, 3D models, device circuit diagrams, ...)

http://www.automation.siemens.com/bilddb/cax_en.aspx?mlfb=3RU1126-1GB0



last change:

Jun 14, 2010