

Transverse auxiliary switch with spring-type terminal 1
NO+1 NC



General technical data:

Product brand name		SIRIUS
Product designation		auxiliary switch, transverse on the front
Design of the product		transverse auxiliary switches
Size of the circuit-breaker		S00, S0, S2, S3
Protection class IP on the front		IP20
Ambient temperature		
• during storage	°C	-50 ... +80
• during operation	°C	-20 ... +60

Auxiliary circuit:

Number of NC contacts for auxiliary contacts instantaneous contact		1
Number of NO contacts for auxiliary contacts instantaneous contact		1
Number of CO contacts of auxiliary contacts instantaneous contact		0
Operating current		
• of auxiliary contacts		
— at AC-15		

— at 230 V

A 0.5

Installation/ mounting/ dimensions:

Mounting type plug-in fixing

Connections/ Terminals:

Type of electrical connection for auxiliary and control current circuit spring-loaded terminals

Type of connectable conductor cross-sections

- for auxiliary contacts
 - solid 2x (0.5 ... 2.5 mm²)
 - finely stranded
 - with core end processing 2x (0.5 ... 1.5 mm²)
 - without core end processing 2x (0.5 ... 1.5 mm²)
- at AWG conductors for auxiliary contacts 2x (20 ... 14)

Certificates/ approvals:

Certificate of suitability CE / UL / CSA / CCC

General Product Approval

Test Certificates

Shipping Approval



[Special Test Certificate](#)



Shipping Approval

other



[Confirmation](#)



Further information

Information- and Downloadcenter (Catalogs, Brochures,...)

<http://www.siemens.com/industrial-controls/catalogs>

Industry Mall (Online ordering system)

<http://www.siemens.com/industrymall>

Cax online generator

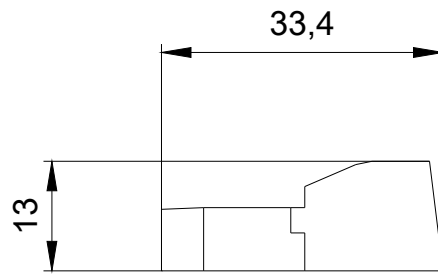
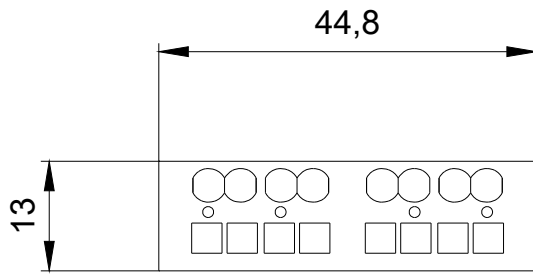
<http://support.automation.siemens.com/WW/CAXorder/default.aspx?lang=en&mlfb=3RV1901-2E>

Service&Support (Manuals, Certificates, Characteristics, FAQs,...)

<https://support.industry.siemens.com/cs/ww/en/ps/3RV1901-2E>

Image database (product images, 2D dimension drawings, 3D models, device circuit diagrams, EPLAN macros, ...)

http://www.automation.siemens.com/bilddb/cax_de.aspx?mlfb=3RV1901-2E&lang=en



SIEMENS

last modified:

10/31/2018