



SIRIUS SOFT STARTER, SIZE S3, 75 A,
37 KW / 400 V, AC 200...460 V,
UC 110...230 V, SCREW CONNECTION

General details:

Product brand name		SIRIUS
Product equipment		
<ul style="list-style-type: none"> integrated bridging contact system 		Yes
<ul style="list-style-type: none"> thyristors 		Yes
Product function		
<ul style="list-style-type: none"> intrinsic device protection 		No
<ul style="list-style-type: none"> motor overload protection 		No
<ul style="list-style-type: none"> evaluation of thermal resistor motor protection 		No
<ul style="list-style-type: none"> Reset external 		No
<ul style="list-style-type: none"> adjustable current limitation 		No
<ul style="list-style-type: none"> inside-delta circuit 		No
Product component / Outlet for enine brake		No
Item designation		
<ul style="list-style-type: none"> according to DIN EN 61346-2 		Q
<ul style="list-style-type: none"> according to DIN 40719 extendable after IEC 204-2 / according to IEC 750 		G

Power Electronics:

Product designation		soft starters for standard applications
Operating current		

<ul style="list-style-type: none"> • at 40 °C / rated value • at 50 °C / rated value • at 60 °C / rated value 	A	75
	A	64
	A	54
Emitted mechanical power / for three-phase servomotors		
<ul style="list-style-type: none"> • at 230 V / at standard switching / at 40 °C <ul style="list-style-type: none"> • rated value • at 400 V / at standard switching / at 40 °C <ul style="list-style-type: none"> • rated value 	kW	22
	kW	37
Yielded mechanical performance (hp) / for three-phase servomotors		
<ul style="list-style-type: none"> • at 200 V / at standard switching <ul style="list-style-type: none"> • at 50 °C / rated value • at 230 V / at standard switching <ul style="list-style-type: none"> • at 50 °C / rated value • at 460 V / at standard switching <ul style="list-style-type: none"> • at 50 °C / rated value 	hp	20
	hp	25
	hp	50
Operating frequency		
<ul style="list-style-type: none"> • rated value 	Hz	50 ... 60
Operating voltage / with standard circuit / rated value	V	200 ... 460

Control electronics:

Type of voltage / of the controlled supply voltage		AC/DC
control supply voltage frequency / 1 / rated value	Hz	50
control supply voltage frequency / 2 / rated value	Hz	60
Relative negative tolerance / of the control supply voltage frequency	%	-10
Relative positive tolerance / of the control supply voltage frequency	%	10
Control supply voltage / 1 / at 50 Hz / for AC	V	110 ... 230
Control supply voltage / 1 / at 60 Hz / for AC	V	110 ... 230
Relative negative tolerance / of the control supply voltage / at 60 Hz / for AC	%	-15
Relative positive tolerance / of the control supply voltage / at 60 Hz / for AC	%	10
Control supply voltage / 1 / for DC	V	110 ... 230
Relative negative tolerance / of the control supply voltage / for DC	%	-15
Relative positive tolerance / of the control supply voltage / for DC	%	10
Design of display / for fault signal		red

Mechanical design:

Size of the engine control device		S3
--	--	----

Width	mm	70
Height	mm	170
Depth	mm	190
Type of fixing/fixation		screw and snap-on mounting
built in orientation		With vertical mounting surface +/-10° rotatable, with vertical mounting surface +/- 10° tiltable to the front and back
distance, to be maintained, to the ranks assembly		
• upwards	mm	60
• sideways	mm	30
• downwards	mm	40
Cable length / maximum	m	100
Number of poles / for main current circuit		3

Electrical connections:

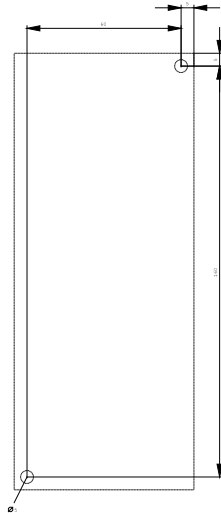
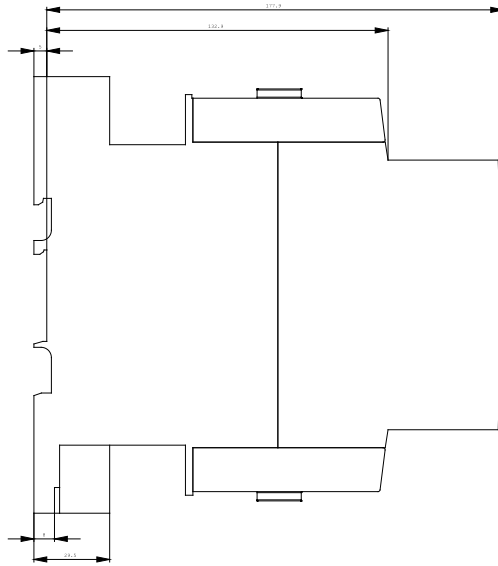
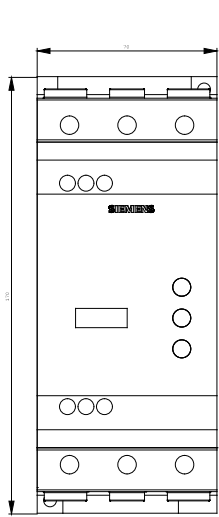
design of the electrical connection		
• for main current circuit		screw-type terminals
• for auxiliary and control current circuit		screw-type terminals
Number of NC contacts / for auxiliary contact		0
Number of NO contacts / for auxiliary contact		2
Number of change-over switches / for auxiliary contact		0
Type of the connectable conductor cross section / for main contacts / for box terminal / when using the front clamping point		
• solid		2x (2.5 ... 16 mm ²)
• finel y stranded / with wire end processing		2.5 ... 35 mm ²
• stran ded		4 ... 70 mm ²
Type of the connectable conductor cross section / for main contacts / for box terminal / when using the back clamping point		
• solid		2x (2.5 ... 16 mm ²)
• finely stranded / with wire end processing		2.5 ... 50 mm ²
• strand ed		10 ... 70 mm ²
Type of the connectable conductor cross section / for main contacts / for box terminal / when using both clamping points		
• solid		2x (2.5 ... 16 mm ²)
• finely st randed / with wire end processing		2x (2.5 ... 35 mm ²)
• stranded		2x (10 ... 50 mm ²)
Type of the connectable conductor cross section / for AWG conductors / for main contacts / for box terminal		

<ul style="list-style-type: none"> • when using the back clamping point • when using the front clamping point • when using both clamping points 		10 ... 2/0
		10 ... 2/0
		2x (10 ... 1/0)
Type of connectable conductor cross section / for DIN cable lug / for main contacts <ul style="list-style-type: none"> • finely stranded • stranded 		2 x (10 ... 50 mm ²) 2x (10 ... 70 mm ²)
Type of the connectable conductor cross-section <ul style="list-style-type: none"> • at AWG-conductors / for main contacts 		2x (7 ... 1/0)
Type of connectable conductor cross section <ul style="list-style-type: none"> • for auxiliary contacts <ul style="list-style-type: none"> • solid • finely stranded / with wire end processing • for AWG conductors / for auxiliary contacts 		2x (0.5 ... 2.5 mm ²) 2x (0.5 ... 1.5 mm ²) 2x (20 ... 14)

Ambient conditions:		
Ambient temperature <ul style="list-style-type: none"> • during the operating phase • during storage 	°C	-25 ... 60
	°C	-40 ... 80
Derating temperature	°C	40
Protection class IP		IP20

Safety:		
Proportion of dangerous failures <ul style="list-style-type: none"> • with high demand rate / according to SN 31920 • with low demand rate / according to SN 31920 	%	50
	%	20
Mean time to failure (MTTF) / with high demand rate <ul style="list-style-type: none"> • according to SN 31920 	a	138
T1 value / for proof test interval or service life <ul style="list-style-type: none"> • according to IEC 61508 	a	20

Further information:	
Information- and Downloadcenter (Catalogs, Brochures,...) http://www.siemens.com/industrial-controls/catalogs	
Global Industry Mall (Online ordering system) http://www.siemens.com/industrial-controls/mall	
Service&Support (Manuals, Certificates, Characteristics, FAQs,...) http://support.automation.siemens.com/WW/view/en/3RW3045-1AB14/all	
Image database (product images, 2D dimension drawings, 3D models, device circuit diagrams, ...) http://www.automation.siemens.com/bilddb/cax_en.aspx?mlfb=3RW3045-1AB14	



last change:

Jul 9, 2010