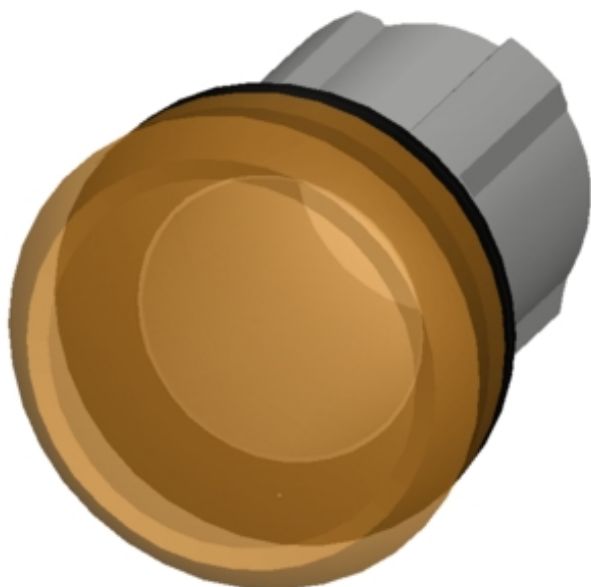


Indicator lights, 22 mm, round, plastic, amber, lens, smooth



|                                 |                             |
|---------------------------------|-----------------------------|
| <b>Product brand name</b>       | SIRIUS ACT                  |
| <b>Product designation</b>      | Indicator lights            |
| <b>Design of the product</b>    | Actuating/signaling element |
| <b>Product type designation</b> | 3SU1                        |

### Actuator

|  |          |
|--|----------|
| <b>Color</b>   |          |
| <ul style="list-style-type: none"> <li>• of the actuating element</li> </ul> | amber    |
| <b>Material of the actuating element</b>                                     | plastic  |
| <b>Shape of the actuating element</b>  | round    |
| <b>Outer diameter of the actuating element</b>                               | 29.45 mm |

### Front ring

|                                     |    |
|-------------------------------------|----|
| <b>Product component front ring</b> | No |
|-------------------------------------|----|

### General technical data

|   |   |
|---|---|
| <b>Protection class IP</b>  | IP66, IP67, IP69(IP69K)   |
| <b>Degree of protection NEMA rating</b>   | NEMA 1, 2, 3, 3R, 4, 4X, 12, 13                                     |
| <b>Shock resistance</b>   |   |
| <ul style="list-style-type: none"> <li>• acc. to IEC 60068-2-27</li> <li>• for railway applications acc. to DIN EN 61373</li> </ul> | <p>Sinusoidal half-wave 50 g / 11 ms</p> <p>Category 1, Class B</p> |

|                                       |   |
|---------------------------------------|---|
| Reference code acc. to DIN EN 81346-2 | P |
| Reference code acc. to DIN EN 61346-2 | P |

### Connections/Terminals

|  |               |
|--|---------------|
| Tightening torque of the screws in the bracket | 1 ... 1.2 N·m |
|--|---------------|





### Ambient conditions

|  |   |
|--|---|
| <b>Ambient temperature</b>   |   |
| <ul style="list-style-type: none"> <li>during operation</li> <li>during storage</li> </ul> | -25 ... +70 °C<br>-40 ... +80 °C                                    |
| Environmental category during operation acc. to IEC 60721                                  | 3M6, 3S2, 3B2, 3C3, 3K6 (with relative air humidity of 10 ... 95 %) |

### Installation/ mounting/ dimensions

|   |         |
|---|---------|
| (height)                                    | 29.5 mm |
| Width                                       | 29.5 mm |
| Shape of the installation opening           | round   |
| Mounting diameter                           | 22.3 mm |
| Positive tolerance of installation diameter | 0.4 mm  |
| Mounting height                             | 11.8 mm |
| Installation width                          | 29.5 mm |
| Installation depth                          | 24.4 mm |


### Certificates/approvals

| General Product Approval  | Declaration of Conformity     | Test Certificates                        |
|---|-------------------------------|--|
|  CSA  UL  EAC  EG-Konf. | <a href="#">Miscellaneous</a> | <a href="#">Special Test Certificate</a> |

### Test Certificates

| Marine / Shipping  |
|--|
| <a href="#">Type Test Certificates/Test Report</a>  ABS  LRS  PRS  RINA  RMRS |

### Marine / Shipping

| other   |
|---|
| <a href="#">Confirmation</a>  DNV-GL |

## Further information

### Information- and Downloadcenter (Catalogs, Brochures,...)

<http://www.siemens.com/industrial-controls/catalogs>

### Industry Mall (Online ordering system)

<https://mall.industry.siemens.com/mall/en/en/Catalog/product?mfb=3SU1001-6AA00-0AA0>

### Cax online generator

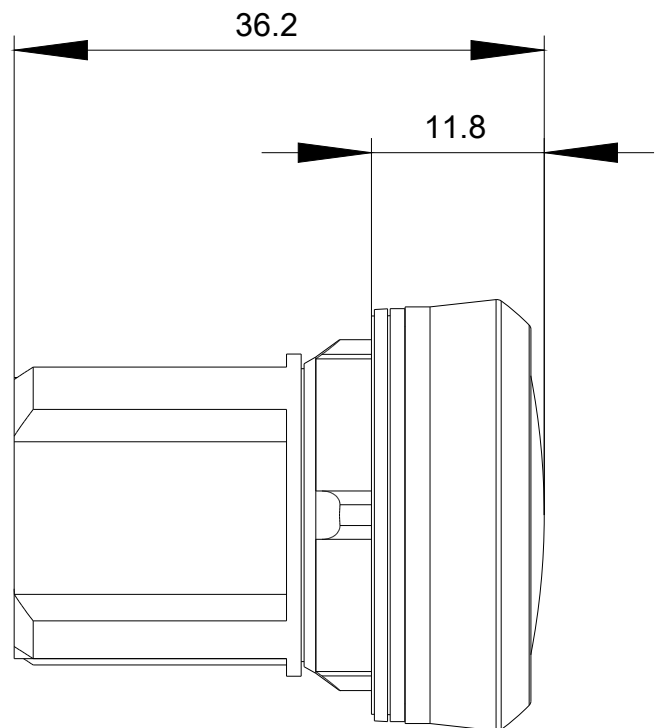
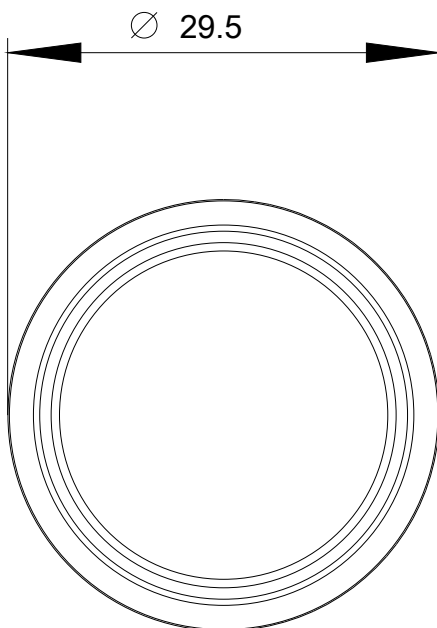
<http://support.automation.siemens.com/WW/CAXorder/default.aspx?lang=en&mfb=3SU1001-6AA00-0AA0>

### Service&Support (Manuals, Certificates, Characteristics, FAQs,...)

<https://support.industry.siemens.com/cs/ww/en/ps/3SU1001-6AA00-0AA0>

### Image database (product images, 2D dimension drawings, 3D models, device circuit diagrams, EPLAN macros, ...)

[http://www.automation.siemens.com/bilddb/cax\\_de.aspx?mfb=3SU1001-6AA00-0AA0&lang=en](http://www.automation.siemens.com/bilddb/cax_de.aspx?mfb=3SU1001-6AA00-0AA0&lang=en)



last modified:

05/30/2019