

acoustic signal device, compact, 22 mm, round, plastic, black,  
 Continuous tone 2.4 kHz, IP40, Sound pressure min. 80 dB/10 cm,  
 with holder, Operating voltage 24 V AC/DC, screw terminal



|                               |                                    |
|-------------------------------|------------------------------------|
| Product brand name            | SIRIUS ACT                         |
| Product designation           | Acoustic signaling device          |
| Design of the product         | Compact unit                       |
| Product type designation      | 3SU1                               |
| Product line                  | Plastic, black, 22 mm              |
| Manufacturer's article number |                                    |
| • of the supplied holder      | <a href="#">3SU1500-0AA10-0AA0</a> |

|                          |   |
|--------------------------|---|
| <b>Enclosure</b>         |   |
| Number of command points | 1 |

|                                         |         |
|-----------------------------------------|---------|
| <b>Actuator</b>                         |         |
| Color                                   |         |
| • of the actuating element              | black   |
| Material of the actuating element       | plastic |
| Shape of the actuating element          | round   |
| Outer diameter of the actuating element | 29.5 mm |

|                              |    |
|------------------------------|----|
| <b>Front ring</b>            |    |
| Product component front ring | No |

|               |  |
|---------------|--|
| <b>Holder</b> |  |
|---------------|--|

|                               |         |
|-------------------------------|---------|
| <b>Material of the holder</b> | Plastic |
|-------------------------------|---------|

### General technical data

|                                                             |                                   |
|-------------------------------------------------------------|-----------------------------------|
| <b>Loudness level at 10 cm distance</b>                     | 80 dB                             |
| <b>Insulation voltage</b>                                   |                                   |
| • rated value                                               | 320 V                             |
| <b>Degree of pollution</b>                                  | 3                                 |
| <b>Surge voltage resistance rated value</b>                 | 4 kV                              |
| <b>Consumed current</b>                                     |                                   |
| • at rated value of operating voltage maximum               | 28 mA                             |
| <b>Protection class IP</b>                                  | IP40                              |
| • of the terminal                                           | IP20                              |
| <b>Degree of protection NEMA rating</b>                     | 1                                 |
| <b>Shock resistance</b>                                     |                                   |
| • acc. to IEC 60068-2-27                                    | Sinusoidal half-wave 50 g / 11 ms |
| • for railway applications acc. to DIN EN 61373             | Category 1, Class B               |
| <b>Vibration resistance</b>                                 |                                   |
| • acc. to IEC 60068-2-6                                     | 10 ... 500 Hz: 5g                 |
| • for railway applications acc. to DIN EN 61373             | Category 1, Class B               |
| <b>Reference code acc. to DIN EN 81346-2</b>                | P                                 |
| <b>Reference code acc. to DIN EN 61346-2</b>                | P                                 |
| <b>Relative positive tolerance of the operating voltage</b> | 20 %                              |
| <b>Relative negative tolerance of the operating voltage</b> | 20 %                              |

### Supply voltage

|                                              |       |
|----------------------------------------------|-------|
| <b>Type of voltage of the supply voltage</b> |       |
| • of the acoustic signal element             | AC/DC |
| <b>Supply voltage at AC</b>                  |       |
| • at 50 Hz rated value                       | 24 V  |
| • at 60 Hz rated value                       | 24 V  |
| <b>Supply voltage at DC rated value</b>      | 24 V  |

### Control circuit/ Control

|                               |     |
|-------------------------------|-----|
| <b>Inrush current maximum</b> | 2 A |
|-------------------------------|-----|

### Connections/ Terminals

|                                                       |                                    |
|-------------------------------------------------------|------------------------------------|
| <b>Type of electrical connection</b>                  | screw-type terminals               |
| <b>Type of connectable conductor cross-sections</b>   |                                    |
| • solid with core end processing                      | 2x (0.5 ... 0.75 mm <sup>2</sup> ) |
| • solid without core end processing                   | 2x (1.0 ... 1.5 mm <sup>2</sup> )  |
| • finely stranded with core end processing            | 2x (0.5 ... 1.5 mm <sup>2</sup> )  |
| • finely stranded without core end processing         | 2x (1,0 ... 1,5 mm <sup>2</sup> )  |
| • at AWG conductors                                   | 2x (18 ... 14)                     |
| <b>Tightening torque of the screws in the bracket</b> | 1 ... 1.2 N·m                      |
| <b>Tightening torque</b>                              |                                    |

- with screw-type terminals

0.8 ... 1 N·m





### Ambient conditions

|                                                                                                |                                                                                                                                           |
|------------------------------------------------------------------------------------------------|-------------------------------------------------------------------------------------------------------------------------------------------|
| <b>Ambient temperature</b>                                                                     |                                                                                                                                           |
| <ul style="list-style-type: none"> <li>• during operation</li> <li>• during storage</li> </ul> | <p>-25 ... +70 °C</p> <p>-40 ... +80 °C</p>                                                                                               |
| Environmental category during operation acc. to IEC 60721                                      | 3M6, 3S2, 3B2, 3K6 (with relative air humidity of 10 ... 95 %, no condensation in operation permitted for all devices behind front panel) |

### Installation/ mounting/ dimensions

|                                                    |                      |
|----------------------------------------------------|----------------------|
| <b>Mounting type</b>                               | front panel mounting |
| <b>Height</b>                                      | 40 mm                |
| <b>Width</b>                                       | 30 mm                |
| <b>Shape of the installation opening</b>           | round                |
| <b>Mounting diameter</b>                           | 22.3 mm              |
| <b>Positive tolerance of installation diameter</b> | 0.4 mm               |
| <b>Mounting height</b>                             | 11.4 mm              |
| <b>Installation width</b>                          | 29.5 mm              |
| <b>Installation depth</b>                          | 49.6 mm              |

### Certificates/ approvals

| General Product Approval                                                                   | Declaration of Conformity                                                                       | Test Certificates                                                                          |
|--------------------------------------------------------------------------------------------|-------------------------------------------------------------------------------------------------|--------------------------------------------------------------------------------------------|
| <br>CSA | <br>UL       | <br>EAC |
|                                                                                            | <br>EG-Konf. | <a href="#">Miscellaneous</a>                                                              |
|                                                                                            |                                                                                                 | <a href="#">Type Test Certificates/Test Report</a>                                         |

| Test Certificates                        | other                        |
|------------------------------------------|------------------------------|
| <a href="#">Special Test Certificate</a> | <a href="#">Confirmation</a> |

### Further information

**Information- and Downloadcenter (Catalogs, Brochures,...)**

<https://www.siemens.com/ic10>

**Industry Mall (Online ordering system)**

<https://mall.industry.siemens.com/mall/en/en/Catalog/product?mlfb=3SU1200-6KB10-1AA0>

**Cax online generator**

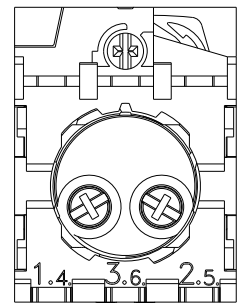
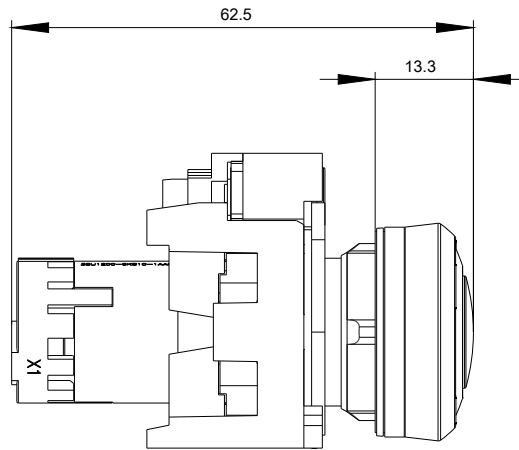
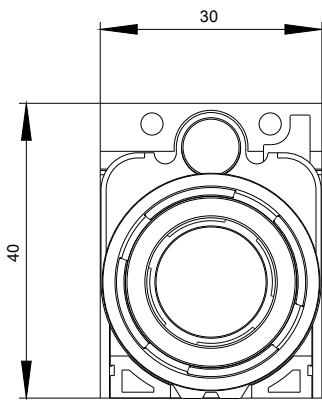
<http://support.automation.siemens.com/WW/CAXorder/default.aspx?lang=en&mlfb=3SU1200-6KB10-1AA0>

**Service&Support (Manuals, Certificates, Characteristics, FAQs,...)**

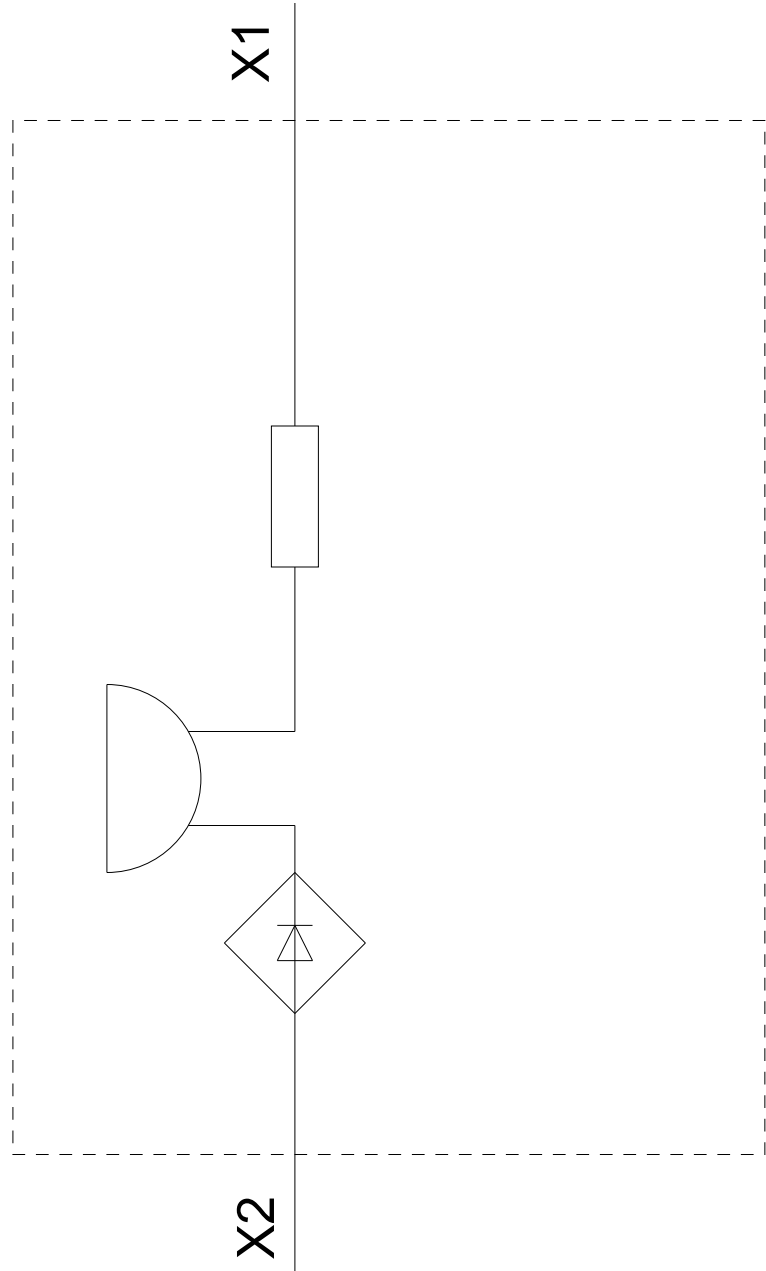
<https://support.industry.siemens.com/cs/ww/en/ps/3SU1200-6KB10-1AA0>

**Image database (product images, 2D dimension drawings, 3D models, device circuit diagrams, EPLAN macros, ...)**

[http://www.automation.siemens.com/bilddb/cax\\_de.aspx?mlfb=3SU1200-6KB10-1AA0&lang=en](http://www.automation.siemens.com/bilddb/cax_de.aspx?mlfb=3SU1200-6KB10-1AA0&lang=en)



24 V AC/DC  
-P



last modified:

03/08/2020