

Labeling plate for EMERGENCY STOP mushroom pushbutton in the enclosure, yellow, without inscription, self-adhesive

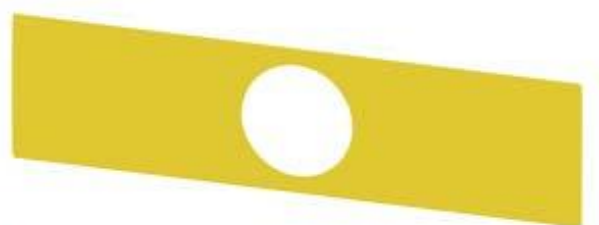


Figure similar

<b>Product brand name</b>	SIRIUS ACT
<b>Product designation</b>	Labeling plate
<b>Design of the product</b>	for enclosures with EMERGENCY STOP
<b>Product type designation</b>	3SU1

**General technical data**

<b>Protection class IP</b>	IP66, IP67, IP69(IP69K)
<b>Shock resistance</b>	Category 1, Class B
<ul style="list-style-type: none"> <li>• for railway applications acc. to DIN EN 61373</li> </ul>	
<b>Vibration resistance</b>	Category 1, Class B
<ul style="list-style-type: none"> <li>• for railway applications acc. to DIN EN 61373</li> </ul>	

**Installation/ mounting/ dimensions**





<b>Height</b>	38 mm
<b>Width</b>	150 mm

**Accessories**

<b>Material of accessory</b>	Plastic
<b>Mounting type of label</b>	stick
<b>Marking of the name plate for command devices</b>	none

Shape of the name plate for command devices	rectangular
Color of the label	yellow/black (plate/text)

### Certificates/approvals

General Product Approval		Declaration of Conformity	Test Certificates
 CSA	 UL		 EG-Konf.
			<a href="#">Declaration of the Compliance with the order</a>
			<a href="#">Special Test Certificate</a>

### other

[Confirmation](#)

### Further information

**Information- and Downloadcenter (Catalogs, Brochures,...)**

<http://www.siemens.com/industrial-controls/catalogs>

**Industry Mall (Online ordering system)**

<https://mall.industry.siemens.com/mall/en/en/Catalog/product?mlfb=3SU1900-0BE31-0AA0>

**Cax online generator**

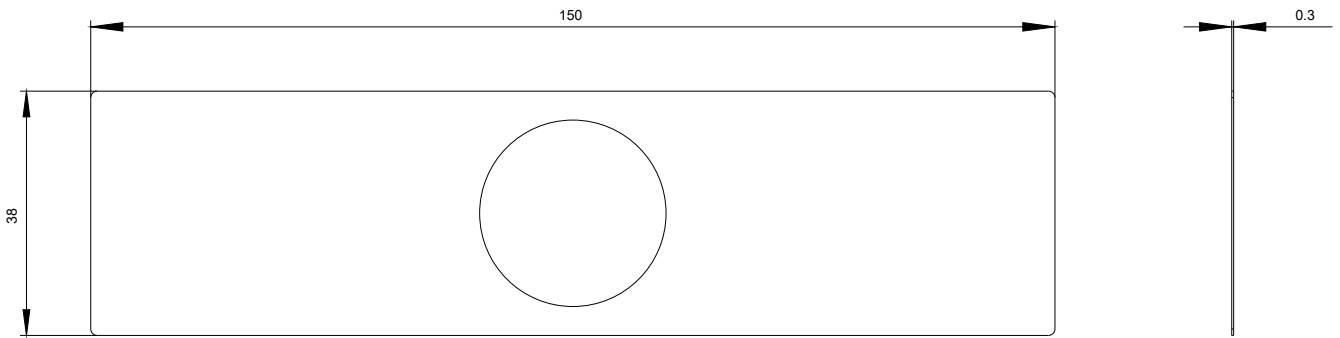
<http://support.automation.siemens.com/WW/CAXorder/default.aspx?lang=en&mlfb=3SU1900-0BE31-0AA0>

**Service&Support (Manuals, Certificates, Characteristics, FAQs,...)**

<https://support.industry.siemens.com/cs/ww/en/ps/3SU1900-0BE31-0AA0>

**Image database (product images, 2D dimension drawings, 3D models, device circuit diagrams, EPLAN macros, ...)**

[http://www.automation.siemens.com/bilddb/cax\\_de.aspx?mlfb=3SU1900-0BE31-0AA0&lang=en](http://www.automation.siemens.com/bilddb/cax_de.aspx?mlfb=3SU1900-0BE31-0AA0&lang=en)



last modified:

04/06/2018