



BASIC UNIT 2 SIMOCODE PRO V; PROFIBUS DP INTERFACE 12 MBIT/S, RS485; 4I/3O FREELY PARAMETERIZABLE; US: AC/DC 110-240V; INPUT F. THERMISTOR MOTOR PROTECTION; RELAY OUTPUTS MONOSTABLE; EXPANDABLE BY EXPANSION MODULES

product brand name		SIRIUS
Product designation		SIMOCODE pro V Motor Management System
Design of the product		basic unit 2

General technical data:

Active power loss total typical	W	7
Insulation voltage		
• with degree of pollution 3 Rated value	V	300
• Rated value	V	300
Shock resistance		
• acc. to IEC 60068-2-27		15g / 11 ms
Vibration resistance		1-6 Hz / 15 mm; 6-500 Hz / 2 g
Surge voltage resistance Rated value	V	4 000
Mechanical service life (switching cycles)		
• typical		10 000 000
Electrical endurance (switching cycles)		
• typical		100 000
Protection class IP		IP20
Reference code		
• acc. to DIN EN 61346-2		F
• acc. to DIN EN 81346-2		F

Electromagnetic compatibility:

EMC emitted interference		
• acc. to IEC 60947-1		class A
EMI immunity acc. to IEC 60947-1		corresponds to degree of severity 3

Conducted interference BURST acc. to IEC 61000-4-4		2 kV (power ports) / 1 kV (signal ports)
Conducted interference conductor-earth SURGE acc. to IEC 61000-4-5		2 kV
Conducted interference conductor-conductor SURGE acc. to IEC 61000-4-5		1 kV
Conducted interference as high-frequency radiation acc. to IEC 61000-4-6		10 V
Field-bound parasitic coupling acc. to IEC 61000-4-3		10 V/m
Electrostatic discharge acc. to IEC 61000-4-2		6 kV contact discharge / 8 kV air discharge

Inputs/ Outputs:

Number of inputs		4
• for thermistor connection		1
Number of digital inputs		4
• with a common reference potential		4
Digital input version		Yes
• Type 1 acc. to IEC 61131		Yes
Number of outputs		3
Number of outputs as contact-affected switching element		3
Number of semiconductor outputs		0

Motor protection functions:

Product function overload protection		Yes
Product function Evaluation of thermistor motor protection		Yes

Motor control functions:

Product function		
• parameterizable overload relay		Yes
• circuit breaker control		Yes
• direct start		Yes
• reverse starting		Yes
• star-delta circuit		Yes
• star-delta reversing circuit		Yes
• Dahlander circuit		Yes
• Dahlander reversing circuit		Yes
• pole-changing switch circuit		Yes
• pole-changing switch reversing circuit		Yes
• Slide control		Yes
• valve control		Yes

Communication/ Protocol:

Product function Bus communication		Yes
Protocol is supported		

<ul style="list-style-type: none"> • PROFIBUS DP protocol 		Yes
Design of the electrical connection of the communication interface		D-sub / terminal

Installation/ mounting/ dimensions:

mounting position		any
Mounting type		screw and snap-on mounting
Height	mm	111
Width	mm	45
Depth	mm	124

Connections/ Terminals:

Design of the electrical connection		
<ul style="list-style-type: none"> • for auxiliary and control current circuit 		screw-type terminals
Product function		
<ul style="list-style-type: none"> • removable terminal for auxiliary and control circuit 		Yes
Type of connectable conductor cross-section		
<ul style="list-style-type: none"> • solid 		1x (0.5 ... 4.0 mm ²), 2x (0.5 ... 2.5 mm ²)
<ul style="list-style-type: none"> • finely stranded with core end processing 		1x (0.5 ... 2.5 mm ²), 2x (0.5 ... 1.5 mm ²)
<ul style="list-style-type: none"> • for AWG conductors 		
<ul style="list-style-type: none"> — solid 		1x (20 ... 12), 2x (20 ... 14)
<ul style="list-style-type: none"> — stranded 		1x (20 ... 14), 2x (20 ... 16)
Tightening torque		
<ul style="list-style-type: none"> • with screw-type terminals 	N·m	0.8 ... 1.2
Tightening torque [lbf·in]		
<ul style="list-style-type: none"> • with screw-type terminals 	lbf·in	7 ... 10.3

Ambient conditions:

Installation altitude at height above sea level maximum	m	4 000
Ambient temperature		
<ul style="list-style-type: none"> • during operation 	°C	-25 ... +60
<ul style="list-style-type: none"> • during storage 	°C	-40 ... +80
<ul style="list-style-type: none"> • during transport 	°C	-40 ... +80
<ul style="list-style-type: none"> • at installation altitude ≤ 3000m during operation maximum 	°C	50
<ul style="list-style-type: none"> • at installation altitude ≤ 4000 m during operation maximum 	°C	40
Relative humidity during operation	%	5 ... 95
Contact rating of the auxiliary contacts acc. to UL		B300 / R300

Short-circuit:

Design of short-circuit protection per output		Fuse links: gG 6 A, quick-response 10 A (IEC 60947-5-1), miniature circuit-breaker C char.: 1.6 A (IEC 60947-5-1) or 6 A (I _K < 500 A)
--	--	---

Safety related data:

Protection against electrical shock	finger-safe
--	-------------

Galvanic isolation:

Design of the electrical isolation	Protective separation in accordance with IEC 60947-1 for all circuits
---	---

Main circuit:

Operating voltage		
• with AC		
— at 50 Hz Rated value	V	110 ... 240
— at 60 Hz Rated value	V	110 ... 240
• for DC Rated value		
— maximum	V	240
— minimum	V	110

Control circuit/ Control:

Type of voltage of the control supply voltage		AC/DC
Control supply voltage with AC		
• at 50 Hz Rated value	V	110 ... 240
• at 60 Hz Rated value	V	110 ... 240
Control supply voltage for DC		
• Rated value	V	110 ... 240
Control supply voltage 1		
• for DC Rated value	V	240
• Rated value	Hz	50
Control supply voltage frequency 2 Rated value	Hz	60
Response value of thermoresistor	Ω	3 400 ... 3 800

Supply voltage:

Type of voltage of the supply voltage	AC/DC
--	-------

Certificates/ approvals:

General Product Approval	EMC	For use in hazardous locations
--------------------------	-----	--------------------------------



For use in hazardous locations	Test Certificates	Shipping Approval
--------------------------------	-------------------	-------------------

[Explosion Protection Certificate](#)

[Special Test Certificate](#)

[Declaration of the Compliance with the order](#)

[Type Test Certificates/Test Report](#)



Shipping Approval	other
-------------------	-------



[Declaration of Conformity](#)

[Confirmation](#)



Profibus

[PROFINET-Certification](#)

[PROFISafe-Certification](#)

Further information

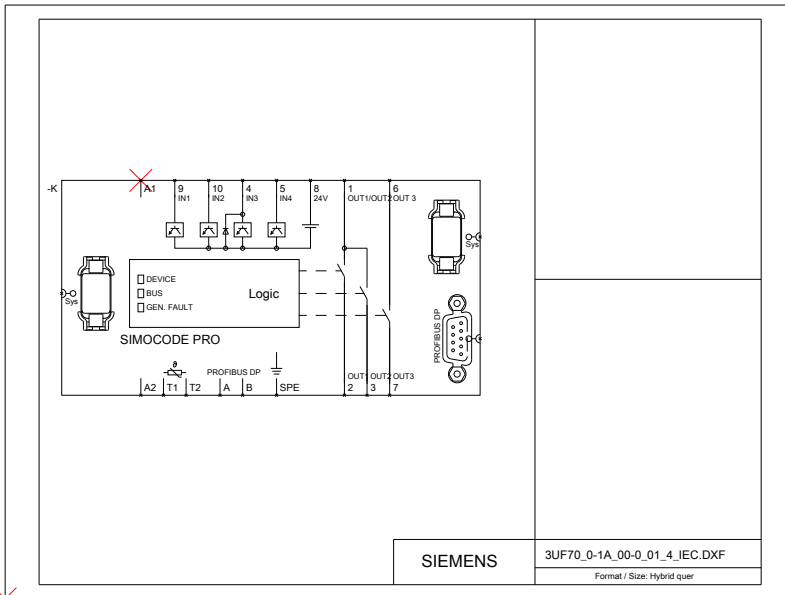
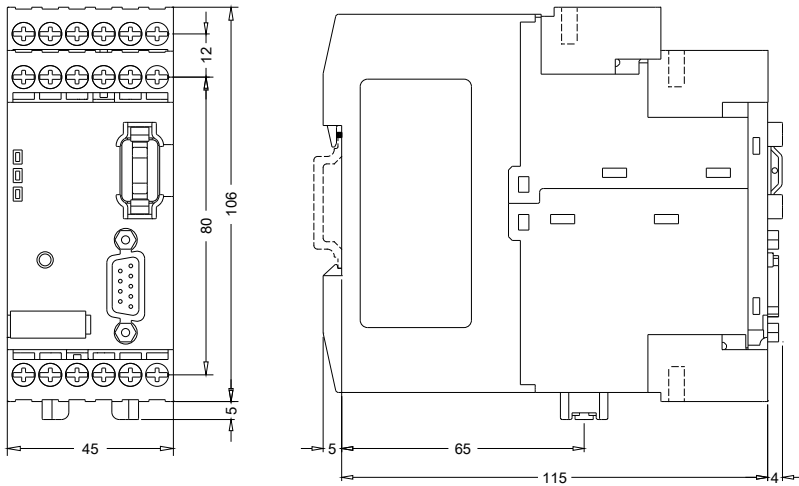
Information- and Downloadcenter (Catalogs, Brochures,...)
<http://www.siemens.com/industrial-controls/catalogs>

Industry Mall (Online ordering system)
<http://www.siemens.com/industrymall>

Cax online generator
<http://support.automation.siemens.com/WW/CAXorder/default.aspx?lang=en&mlfb=3UF70101AU000>

Service&Support (Manuals, Certificates, Characteristics, FAQs,...)
<http://support.automation.siemens.com/WW/view/en/3UF70101AU000/all>

Image database (product images, 2D dimension drawings, 3D models, device circuit diagrams, EPLAN macros, ...)
http://www.automation.siemens.com/bilddb/cax_de.aspx?mlfb=3UF70101AU000&lang=en



last modified:

27.01.2015