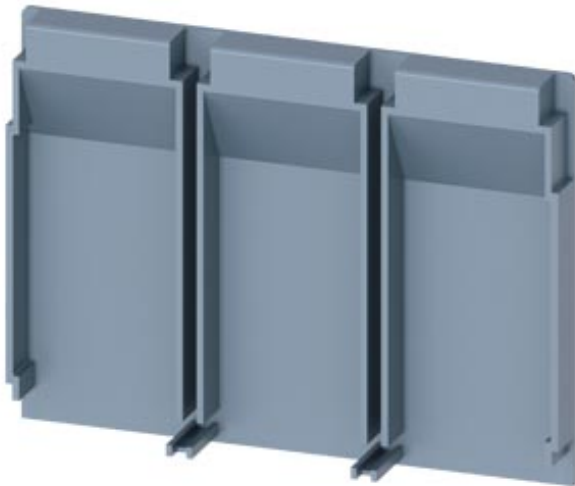





insulating plate extended 3-pole 1 unit accessory for: 3VA1 100/160



Model	
Product brand name	SETRON
Product designation	accessories

Certificates				
General Product Approval	EMC	Declaration of Conformity	Test Certificates	other
<a href="#">Miscellaneous</a>		 RCM	 EG-Konf.	<a href="#">Type Test Certificates/Test Report</a>
				<a href="#">Miscellaneous</a>

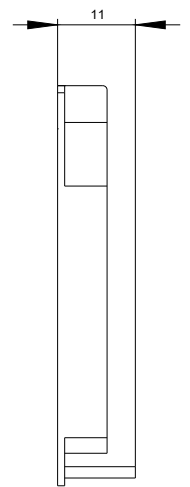
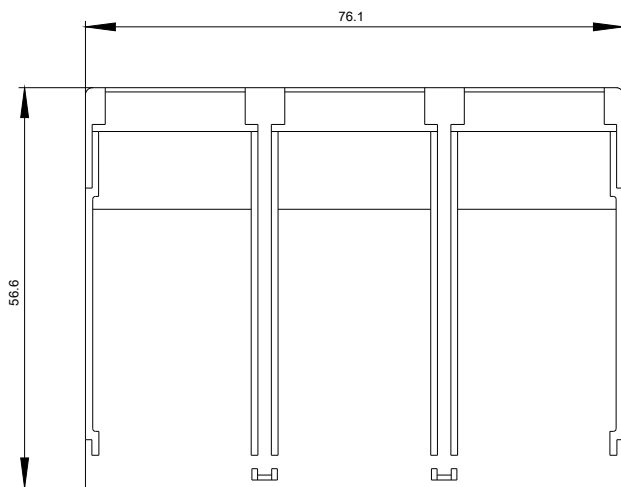
### Further information

**Information- and Downloadcenter (Catalogs, Brochures,...)**  
<http://www.siemens.com/lowvoltage/catalogs>

**Industry Mall (Online ordering system)**  
<https://mall.industry.siemens.com/mall/en/en/Catalog/product?mfb=3VA9111-0WJ30>

**Service&Support (Manuals, Certificates, Characteristics, FAQs,...)**  
<https://support.industry.siemens.com/cs/ww/en/ps/3VA9111-0WJ30>

**Image database (product images, 2D dimension drawings, 3D models, device circuit diagrams, ...)**  
[http://www.automation.siemens.com/bilddb/cax\\_en.aspx?mfb=3VA9111-0WJ30](http://www.automation.siemens.com/bilddb/cax_en.aspx?mfb=3VA9111-0WJ30)



**last modified:**

11/17/2018