

Similar to image

CIRCUIT-BREAKER VL160X N STANDARD SWITCHING  
CAPACITY ICU=55KA / 415 V AC 3 POLE,  
NON-AUTOMATIC OVERCURRENT RELEASE MAGNETIC  
IN=160A,  
RATED CURRENT II=1800A,  
SHORT CIRCUIT WITH SCREW CONNECTION

**General technical data:**

|  |     |                                |
|--|-----|--------------------------------|
| <b>Number of poles</b>   |     | 3                              |
| <b>Design of the overcurrent release</b>                       |     | M                              |
| <b>Acceptability for application</b>                           |     | non-automatic circuit-breakers |
| <b>Electrical operating cycles as operating time / typical</b> |     | 10,000                         |
| <b>Mechanical operating cycles as operating time / typical</b> |     | 20,000                         |
| <b>Active power loss / maximum</b>                             | W   | 40                             |
| <b>Product component</b>                                       |     |                                |
| • auxiliary switch   |     | No                             |
| • Voltage trigger  |     | No                             |
| • undervoltage release mechanism                               |     | No                             |
| • undervoltage release with leading contact                    |     | No                             |
| <b>Product function</b>  |     |                                |
| • ground-fault protection                                      |     | No                             |
| • for zero conductors / short-circuit and overload protection  |     | No                             |
| • overload protection  |     | No                             |
| <b>Operating cycles / maximum</b>                              | 1/s | 120                            |
| <b>Protection class IP</b>                                     |     | IP20                           |
| <b>Protective function of the overcurrent release</b>          |     | I                              |

|   |    |         |
|---|----|---------|
| <b>Impulse voltage resistance / rated value</b> | kV | 8       |
| <b>Ambient temperature</b>                      |    |         |
| • during operating                              |    |         |
| • minimum                                       | °C | -25 ... |
| • maximum                                       | °C | 70      |
| • during storage                                |    |         |
| • minimum                                       | °C | -40     |
| • maximum                                       | °C | 50      |

#### Main circuit:

|   |    |       |
|---|----|-------|
| <b>Insulation voltage / for AC / rated value</b>                            | V  | 800   |
| <b>Operating frequency</b>  |    |       |
| • 1 / rated value   | Hz | 50    |
| • 2 / rated value   | Hz | 60    |
| <b>Item designation</b>   |    |       |
| • according to DIN 40719 extendable after IEC 204-2 / according to IEC 750  |    | Q     |
| • according to DIN EN 61346-2   |    | Q     |
| <b>Operating voltage</b>  |    |       |
| • for main current circuit  |    |       |
| • at 50 Hz / for AC   |    |       |
| • maximum   | V  | 690   |
| • at 60 Hz / for AC   |    |       |
| • maximum   | V  | 690   |
| • for DC  |    |       |
| • maximum   | V  | 500   |
| <b>Operating current</b>  |    |       |
| • at 40 °C / rated value  | A  | 160   |
| • at 50 °C / rated value  | A  | 160   |
| • at 60 °C / rated value  | A  | 148.8 |
| • at 70 °C / rated value  | A  | 137.6 |
| <b>Continuous current / rated value</b>                                     | A  | 160   |
| <b>Derating temperature / for the rated value of the continuous current</b> | °C | 50    |

#### Auxiliary circuit:

|   |  |   |
|---|--|---|
| <b>Number of NC contacts / for auxiliary contacts</b> |  | 0 |
| <b>Number of NO contacts / for auxiliary contacts</b> |  | 0 |

#### Short-circuit:

|   |  |  |
|---|--|--|
| <b>Adjustable response current</b>          |  |  |
| • of the current-dependent overload release |  |  |

|  |    |           |
|--|----|-----------|
| <ul style="list-style-type: none"> <li>• initial value</li> </ul>                                    |    | ...       |
| <ul style="list-style-type: none"> <li>• of the non-delayed short-circuit release</li> </ul>         |    |           |
| <ul style="list-style-type: none"> <li>• initial value</li> </ul>                                    | A  | 1,800 ... |
| <ul style="list-style-type: none"> <li>• final value</li> </ul>                                      | A  | 1,800     |
| <b>Breaking capacity limit short-circuit current (I<sub>cu</sub>) / at 415 V / rated value</b>       | kA | 55        |
| <b>Operating short-circuit current breaking capacity (I<sub>cs</sub>)</b>                            |    |           |
| <ul style="list-style-type: none"> <li>• at 480 V / in accordance with NEMA / rated value</li> </ul> | kA | 65        |
| <ul style="list-style-type: none"> <li>• at 600 V / in accordance with NEMA / rated value</li> </ul> | kA | 75        |

#### Installation/mounting/dimensions:

|                         |    |                |
|-------------------------|----|----------------|
| <b>Type of mounting</b> |    | fixed mounting |
| <b>Height</b>           | mm | 157.5          |
| <b>Width</b>            | mm | 104.5          |
| <b>Depth</b>            | mm | 106.5          |

#### Connections:

|  |  |                      |
|--|--|----------------------|
| <b>Arrangement of electrical connectors / for main current circuit</b> |  | front side           |
| <b>Design of the electrical connection / for main current circuit</b>  |  | screw-type terminals |

#### Certificates/approvals:

#### Further information:

##### Information- and Downloadcenter (Catalogs, Brochures,...)

<http://www.siemens.com/lowvoltage/catalogs>

##### Industry Mall (Online-Bestellsystem)

<http://www.siemens.com/lowvoltage/mall>

##### Service&Support (Manuals, Certificates, Characteristics, FAQs,...)

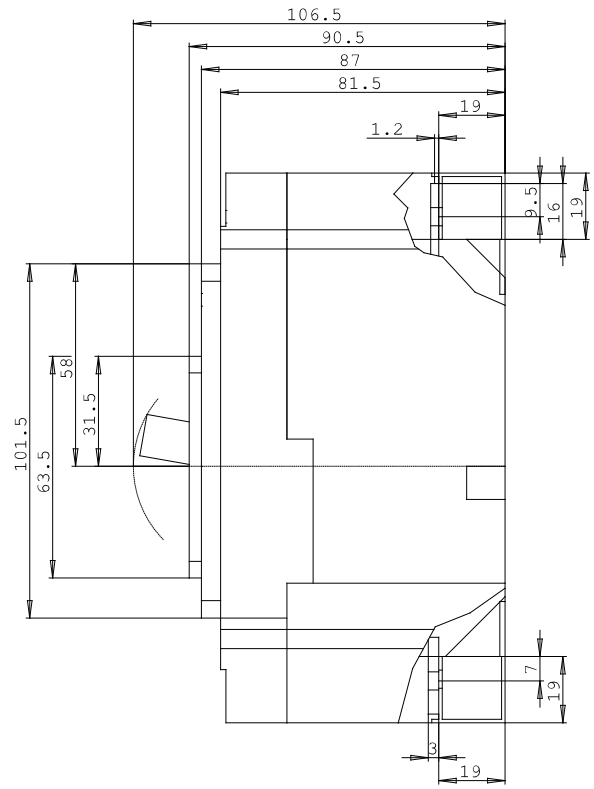
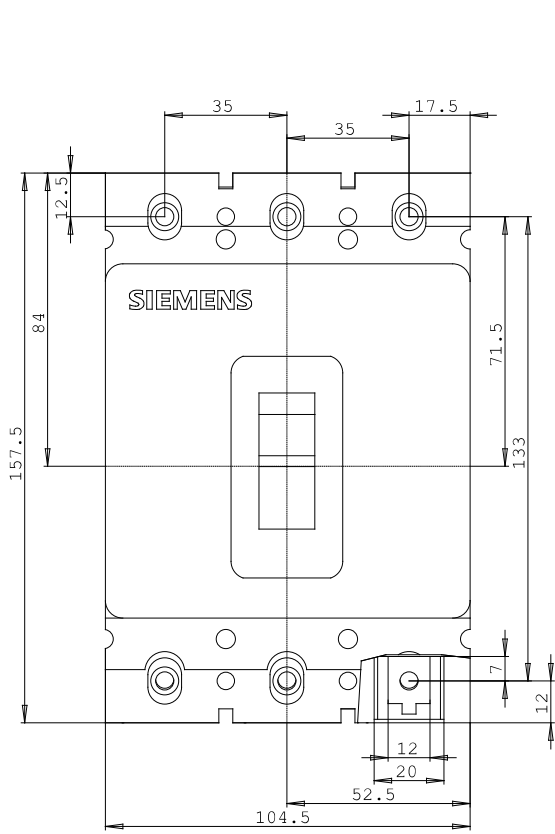
<http://support.automation.siemens.com/WW/view/en/3VL1716-1DE36-0AA0/all>

##### Image database (product images, 2D dimension drawings, 3D models, device circuit diagrams, ...)

[http://www.automation.siemens.com/bilddb/cax\\_en.aspx?mlfb=3VL1716-1DE36-0AA0](http://www.automation.siemens.com/bilddb/cax_en.aspx?mlfb=3VL1716-1DE36-0AA0)

##### CAX-Online-Generator

<http://www.siemens.com/cax>



last change:

Feb 6, 2012