

Similar to image

CIRCUIT-BREAKER VL 400N STANDARD BREAKING CAPACITY ICU=55KA / 415 V AC 4 POLE, LINE PROTECTION OVERCURRENT RELEASE TM, LI IN=400A, RATED CURRENT IR=320-400A, OVERLOAD II=2000-4000A, SHORT CIRCUIT N PROTECTED

General technical data:

Number of poles		4
Design of the overcurrent release		TM
Acceptability for application		system protection
Electrical operating cycles as operating time / typical		10,000
Mechanical operating cycles as operating time / typical		20,000
Active power loss / maximum	W	175
Product component		
• auxiliary switch		No
• Voltage trigger		No
• undervoltage release mechanism		No
• undervoltage release with leading contact		No
Product function		
• of the thermal overload release		adjustable
• ground-fault protection		No
• for zero conductors / short-circuit and overload protection		Yes
• overload protection		Yes
Operating cycles / maximum	1/s	120
Protection class IP		IP20

Protective function of the overcurrent release		LIN
Impulse voltage resistance / rated value	kV	8
Ambient temperature		
• during operating		
• minimum	°C	-25 ...
• maximum	°C	70
• during storage		
• minimum	°C	-40
• maximum	°C	50

Main circuit:

Insulation voltage / for AC / rated value	V	800
Operating frequency		
• 1 / rated value	Hz	50
• 2 / rated value	Hz	60
Item designation		
• according to DIN 40719 extendable after IEC 204-2 / according to IEC 750		Q
• according to DIN EN 61346-2		Q
Operating voltage		
• for main current circuit		
• at 50 Hz / for AC		
• maximum	V	690
• at 60 Hz / for AC		
• maximum	V	690
• for DC		
• maximum	V	500
Operating current		
• at 40 °C / rated value	A	400
• at 50 °C / rated value	A	400
• at 60 °C / rated value	A	372
• at 70 °C / rated value	A	344
Continuous current / rated value	A	400
Derating temperature / for the rated value of the continuous current	°C	50

Auxiliary circuit:

Number of NC contacts / for auxiliary contacts		0
Number of NO contacts / for auxiliary contacts		0

Short-circuit:

Adjustable response current		
------------------------------------	--	--

<ul style="list-style-type: none"> • of the current-dependent overload release <ul style="list-style-type: none"> • initial value • final value • of the non-delayed short-circuit release <ul style="list-style-type: none"> • initial value • final value 	A	320 ...
	A	400
	A	2,000 ...
	A	4,000
Breaking capacity limit short-circuit current (I_{cu}) / at 415 V / rated value	kA	55

Installation/mounting/dimensions:

Type of mounting		fixed mounting
Height	mm	279.5
Width	mm	183.5
Depth	mm	163.5

Connections:

Arrangement of electrical connectors / for main current circuit		front side
Design of the electrical connection / for main current circuit		screw-type terminals

Certificates/approvals:

Further information:

Information- and Downloadcenter (Catalogs, Brochures,...)

<http://www.siemens.com/lowvoltage/catalogs>

Industry Mall (Online-Bestellsystem)

<http://www.siemens.com/lowvoltage/mall>

Service&Support (Manuals, Certificates, Characteristics, FAQs,...)

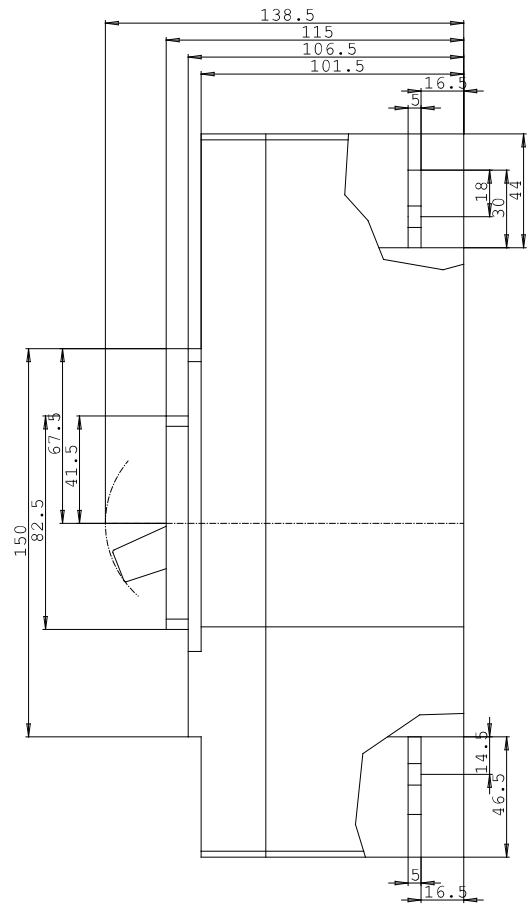
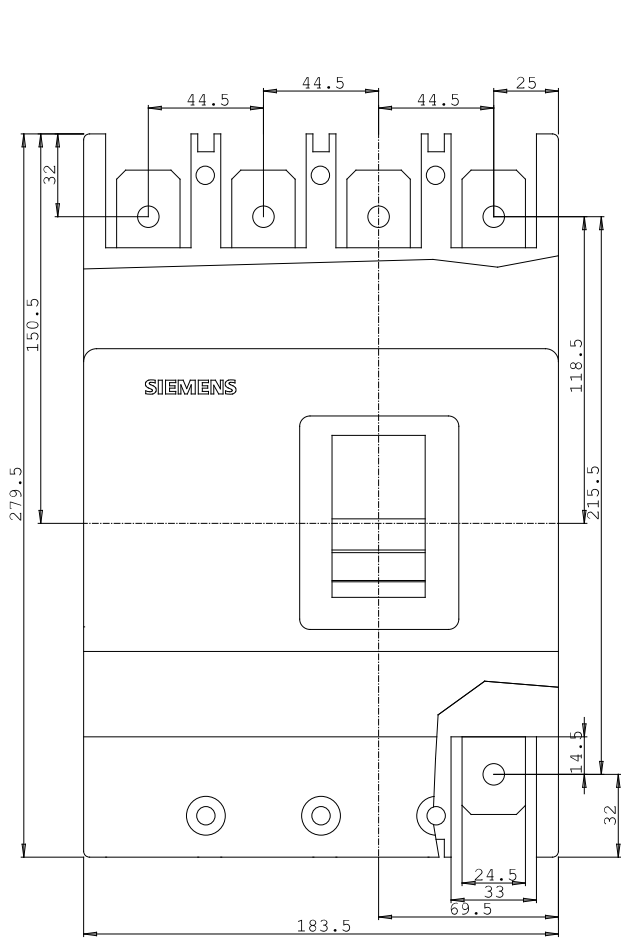
<http://support.automation.siemens.com/WW/view/en/3VL4740-1EC46-0AA0/all>

Image database (product images, 2D dimension drawings, 3D models, device circuit diagrams, ...)

http://www.automation.siemens.com/bilddb/cax_en.aspx?mlfb=3VL4740-1EC46-0AA0

CAX-Online-Generator

<http://www.siemens.com/cax>



last change:

Apr 9, 2012