

Figure similar

| Model | |
|--|--|
| product brandname | SETRON |
| Product designation | Motorized operating mechanism with stored energy mechanism |
| Type of the driving mechanism | Motorized operating mechanism with spring energy store |
| General technical data | |
| Break time / typical | 5 s |
| Operating frequency / maximum | 120 1/h |
| Voltage | |
| Fuse protection type / for external auxiliary power supply / required | NEOZED fuse (gL/gG): 6 A / miniature circuit breaker, C char.: 6 A |
| Operating range factor control supply voltage rated value | |
| <ul style="list-style-type: none"> • at AC / at 60 Hz / initial value • at AC / at 60 Hz / Full-scale value • at DC / initial value • at DC / Full-scale value | <p>0.85</p> <p>1.1</p> <p>0.85</p> <p>1.1</p> |

| Protection class | |
|---|-----------------------|
| Protection class IP | IP30 |
| Electricity | |
| Make time / typical | 0.1 s |
| Control current | |
| Operating apparent output | 200 V·A |
| Control supply voltage | |
| • at DC / rated value / minimum | 24 V |
| • at DC / rated value / maximum | 24 V |
| Operating range factor control supply voltage rated value / at AC / at 50 Hz | |
| • initial value | 0.85 |
| • Full-scale value | 1.1 |
| Accessories | |
| accessories | Accessories for VL400 |
| Connections | |
| Connectable conductor cross-section / stranded | |
| • minimum | 0.75 mm ² |
| • maximum | 1.5 mm ² |
| Wire stripping length | 10 mm |
| Connectable conductor cross-section | |
| • solid | |
| — minimum | 0.75 mm ² |
| — maximum | 1.5 mm ² |
| • finely stranded / with core end processing | |
| — minimum | 0.75 mm ² |
| — maximum | 1.5 mm ² |
| Tightening torque | |
| • maximum | 1 N·m |
| Mechanical Design | |
| Height | 160 mm |
| Width | 140 mm |
| Depth | 160 mm |
| Net weight | 4 610 g |
| Environmental conditions | |
| Ambient temperature | |
| • during operation / minimum | -25 °C |
| • during operation / maximum | 70 °C |
| • during storage / minimum | -40 °C |
| • during storage / maximum | 80 °C |

Certificates

Equipment marking

- acc. to DIN EN 61346-2 M
- acc. to DIN EN 81346-2 M

| General Product Approval | EMC | Declaration of Conformity | Test Certificates | Shipping Approval |
|--------------------------|-----|---------------------------|-------------------|-------------------|
|--------------------------|-----|---------------------------|-------------------|-------------------|

[sonstig](#)



[spezielle Prüfbescheinigung](#)
[n](#)



| Shipping Approval | other |
|-------------------|-------|
|-------------------|-------|



[sonstig](#)

[Bestätigungen](#)

[Umweltbestätigung](#)

Further information

Information- and Downloadcenter (Catalogs, Brochures,...)

<http://www.siemens.com/lowvoltage/catalogs>

Industry Mall (Online ordering system)

<https://mall.industry.siemens.com/mall/en/en/Catalog/product?mlfb=3VL9400-3MJ00>

Service&Support (Manuals, Certificates, Characteristics, FAQs,...)

<http://support.automation.siemens.com/WW/view/en/3VL9400-3MJ00/all>

Image database (product images, 2D dimension drawings, 3D models, device circuit diagrams, ...)

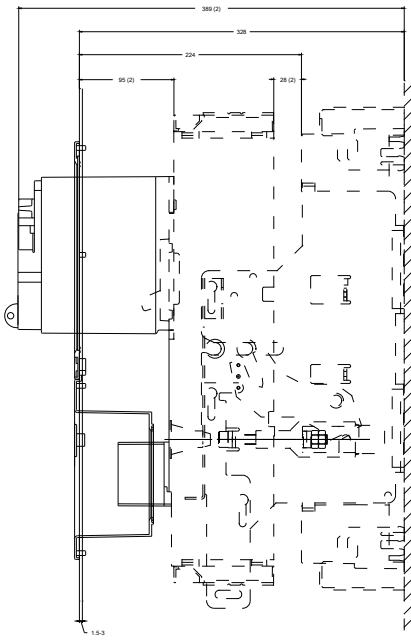
http://www.automation.siemens.com/bilddb/cax_en.aspx?mlfb=3VL9400-3MJ00

CAX-Online-Generator

<http://www.siemens.com/cax>

Tender specifications

<http://www.siemens.com/specifications>



(1) Betriebsstellung
(2) Trennstellung

