

ACCESSORY FOR VL630, VL800,
STORED ENERGY OPERATOR 220-250V AC/DC

Similar to image

Technical data:

product brand name	SENTRON
---------------------------	---------

General technical data:

Ambient temperature		
• during storage	°C	-40 ... +80
• during operating	°C	-25 ... +70
Protection class IP		IP30

Switching Function:

Make time / typical	s	0.1
Break time / typical	s	5
Operating cycles / maximum	1/h	60
Pulse duration / minimum	ms	50

Control circuit:

Type of voltage / for operating		AC/DC
Control supply voltage		
• at 50 Hz / at AC	V	220 ... 250
• rated value		
• at 60 Hz / at AC		

• rated value	V	220 ... 250
Control supply voltage / for DC		
• rated value	V	220 ... 250
Operating range factor control supply voltage rated value		
• at 50 Hz		
• for AC		0.85 ... 1.1
• at 60 Hz		
• for AC		0.85 ... 1.1
• for DC		0.85 ... 1.1
Operating apparent output	V·A	250

Connections:

Conductor cross-section that can be connected		
• solid	mm ²	0.75 ... 1.5
• multibrin	mm ²	0.75 ... 1.5
• finely stranded / with wire end processing	mm ²	0.75 ... 1.5
Wire stripping length	mm	10
Starting torque	/ N·m	1

Dimensions and weights:

Height	mm	190
Width	mm	173
Depth	mm	160
Net weight	g	5,639

Certificates/approvals:

General Product Approval



EG-Konf.

Test Certificates

[Special Test Certificate](#)

Declaration of Conformity

Shipping Approval



other

[Confirmation](#)

[other](#)

[Environmental Confirmations](#)

Further information:

Information- and Downloadcenter (Catalogs, Brochures,...)

<http://www.siemens.com/lowvoltage/catalogs>

Industry Mall (Online ordering system)

<http://www.siemens.com/lowvoltage/maill>

Service&Support (Manuals, Certificates, Characteristics, FAQs,...)

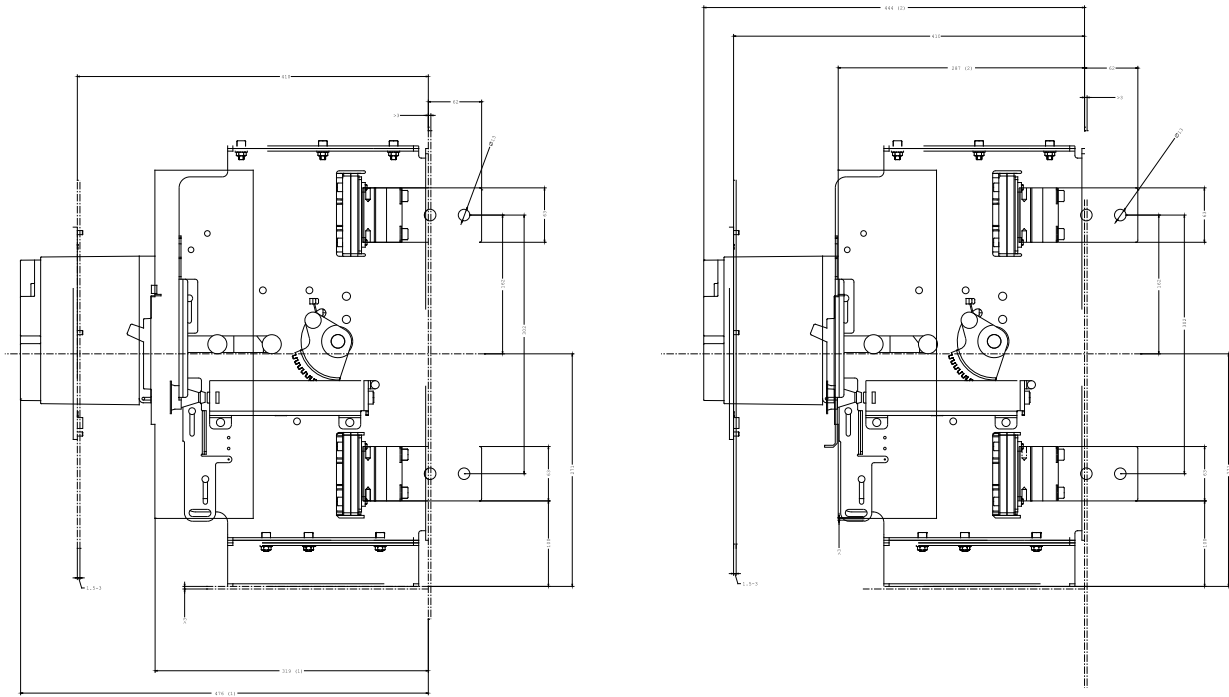
<http://support.automation.siemens.com/WW/view/en/3VL9600-3MQ00/all>

Image database (product images, 2D dimension drawings, 3D models, device circuit diagrams, ...)

http://www.automation.siemens.com/bilddb/cax_en.aspx?mlfb=3VL9600-3MQ00

CAX-Online-Generator

<http://www.siemens.com/cax>



- (1) Ausgefahren
(2) Eingefahren

last change:

Aug 12, 2013