

Datenblatt: Transformator SITAS
Typ: 4AM3442-8DD40-0FA0



Beschreibung:

Deutsch

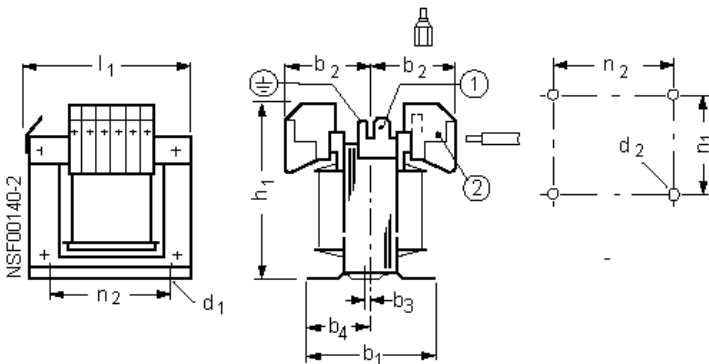
| | |
|--|---|
| Phasen: | 1 |
| Bemessungsleistung /-kurzzeitleistung (S6) [kVA] : | 0,1 /0,31 |
| Bemessungseingangsspannung [V]: | 550-525-500-480-460-440-415-400-380-230-208 |
| Bemessungsausgangsspannung [V]: | 2x115 |
| Bemessungsausgangsstrom [A]: | 0,435-0,87 |
| Bemessungsfrequenz [Hz] : | 50...60 |
| Schaltgruppe / Schirmw.: | li0 /0 |
| Bemessungsumgebungstemp. / Therm. Klasse : | 40 /B |
| Schutzart IP: | 00 |
| Anschlussart: | Schraub-/Flachsteck-Anschluss |
| Montageart: | Schrauben / Hutschiene |
| Vorschrift : | EN 61558-2-1, -2-2, -2-4 |
| Verluste [W]: | 17,3 |
| Gewicht [kg]: | 2,1 |

Anschluss:

Klemmenleiste 1: 1-2-3-4-5-6-7
 Klemmenleiste 2: 34-33-32-31

| Art | Spg. [V] | Anschluss | Verbindung |
|------|----------|-----------|-------------|
| PRI1 | 550 | 1-7 | - |
| | 525 | 2-7 | - |
| | 500 | 3-7 | - |
| | 480 | 1-6 | - |
| | 460 | 2-6 | - |
| | 440 | 3-6 | - |
| | 415 | 1-5 | - |
| | 400 | 2-5 | - |
| | 380 | 3-5 | - |
| | 230 | 2-4 | - |
| | 208 | 3-4 | - |
| | SEC1 | 230 | 31-34 |
| 115 | | 31-34 | 31-32;33-34 |

Maßzeichnung / Montagelochung :



- (1) Flachstecker DIN 46 244-A 6,3-0,8
- (2) bis 24A: Schraubanschluss eindrätig 0,5 bis 6 mm², feindrätig 0,5 bis 4 mm², Flachstecker DIN 46 244-A 6,3-0,8

Abmessungen [mm]:

| | | | | | |
|----|----|----|---------|----|----|
| b1 | 86 | d1 | 4,8x8,4 | n1 | 65 |
| b2 | 51 | d2 | M4 | n2 | 64 |
| b3 | 2 | h1 | 97 | | |
| b4 | 34 | l1 | 86 | | |

Datasheet: Transformer SITAS
Type: 4AM3442-8DD40-0FA0

SIDAC-T
 CE cRU US 

Description:

English

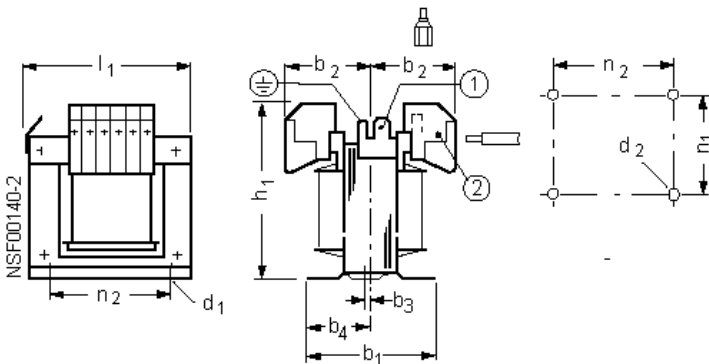
| | |
|--|---|
| phases: | 1 |
| rated output/short-time capacity (S6) [kVA]: | 0,1 / 0,31 |
| rated input voltage [V]: | 550-525-500-480-460-440-415-400-380-230-208 |
| rated output voltage [V]: | 2x115 |
| rated output current [A]: | 0,435-0,87 |
| rated frequency [Hz]: | 50...60 |
| vector group / shield winding | li0 / 0 |
| rated ambient temperature / temp. Class: | 40 / B |
| protection IP: | 00 |
| type of terminals: | screw/tab connection |
| mounting | screws/mounting rails |
| standard : | EN 61558-2-1, -2-2, -2-4 |
| Losses [W]: | 17,3 |
| Weight [kg]: | 2,1 |

Connection:

Terminals 1: 1-2-3-4-5-6-7
 Terminals 2: 34-33-32-31

| Type | Voltage [V] | Terminals | Wiring | |
|------|-------------|-----------|--------|-------------|
| PRI1 | 550 | 1-7 | - | |
| | 525 | 2-7 | - | |
| | 500 | 3-7 | - | |
| | 480 | 1-6 | - | |
| | 460 | 2-6 | - | |
| | 440 | 3-6 | - | |
| | 415 | 1-5 | - | |
| | 400 | 2-5 | - | |
| | 380 | 3-5 | - | |
| | 230 | 2-4 | - | |
| | 208 | 3-4 | - | |
| | SEC1 | 230 | 31-34 | 32-33 |
| | | 115 | 31-34 | 31-32;33-34 |

Dimension drawing / Mounting :



- (1) Tap connector DIN 46 244-A 6,3-0,8
- (2) to 24A: Screw connection solid wire 0,5 to 6 mm², finely stranded wire 0,5 to 4 mm², Tap connector DIN 46 244-A 6,3-0,8

Dimension values [mm]:

| | | | | | |
|----|----|----|---------|----|----|
| b1 | 86 | d1 | 4,8x8,4 | n1 | 65 |
| b2 | 51 | d2 | M4 | n2 | 64 |
| b3 | 2 | h1 | 97 | | |
| b4 | 34 | l1 | 86 | | |

Fiche technique: Transformateur SITAS

Type: 4AM3442-8DD40-0FA0



Francais

Description:

| | |
|--|---|
| Phases : | 1 |
| Puissance assignée/puiss. courte durée (S6) [kVA]: | 0,1 / 0,31 |
| Puissance d'entrée assignée [V] : | 550-525-500-480-460-440-415-400-380-230-208 |
| Tension assignée de sortie [V] : | 2x115 |
| Courant assigné de sortie [A] : | 0,435-0,87 |
| Fréquence assignée [Hz] : | 50...60 |
| Couplage / écran : | II0 / 0 |
| Temp. ambiante assignée/classe therm. : | 40 / B |
| Degré de protection IP : | 00 |
| Connectique : | Connecteur plat / a vis |
| Type de montage : | Vis / Profile symétrique |
| Prescription : | EN 61558-2-1, -2-2, -2-4 |
| Pertes [W]: | 17,3 |
| Poids [kg]: | 2,1 |

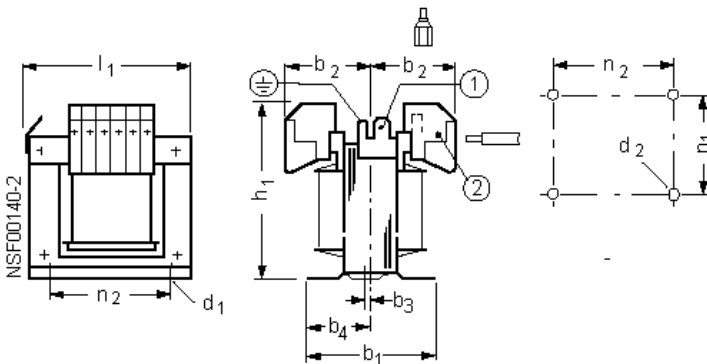
Raccordement:

Bornier 1: 1-2-3-4-5-6-7

Bornier 2: 34-33-32-31

| Type | Tension [V] | Raccordement | Connexion |
|------|-------------|--------------|-------------|
| PRI1 | 550 | 1-7 | - |
| | 525 | 2-7 | - |
| | 500 | 3-7 | - |
| | 480 | 1-6 | - |
| | 460 | 2-6 | - |
| | 440 | 3-6 | - |
| | 415 | 1-5 | - |
| | 400 | 2-5 | - |
| | 380 | 3-5 | - |
| | 230 | 2-4 | - |
| | 208 | 3-4 | - |
| SEC1 | 230 | 31-34 | 32-33 |
| | 115 | 31-34 | 31-32;33-34 |

Encombrement / Fixations



1) Languette DIN 46 244-A 6,3-0,8

(2) à 24 A: Bornes à vis âme massive 0,5 à 6 mm², âme souple 0,5 à 4 mm², Languette DIN 46 244-A 6,3-0,8

Dimensions [mm]

| | | | | | |
|----|----|----|---------|----|----|
| b1 | 86 | d1 | 4,8x8,4 | n1 | 65 |
| b2 | 51 | d2 | M4 | n2 | 64 |
| b3 | 2 | h1 | 97 | | |
| b4 | 34 | l1 | 86 | | |

Hoja de datos: Transformador SITAS
Tipo: 4AM3442-8DD40-0FA0



Español

Descripción:

| | |
|---|---|
| Fases: | 1 |
| Potencia asignada/cap. de carga breve (S6) [kVA]: | 0,1 / 0,31 |
| Tensión asignada de entrada [V]: | 550-525-500-480-460-440-415-400-380-230-208 |
| Tensión asignada de salida [V]: | 2x115 |
| Intensidad asignada de salida [A]: | 0,435-0,87 |
| Frecuencia asignada [Hz]: | 50...60 |
| Grupo de conexión / prot. enrollando: | II0 / 0 |
| Temperatura ambiente / clase térmica: | 40 / B |
| Grado de protección IP: | 00 |
| Tipo de conexión: | Conexión por conector plano/tornillo |
| Tipo de montaje: | Tornillos / perfiles |
| prescripciones: | EN 61558-2-1, -2-2, -2-4 |
| Pérdidas [W]: | 17,3 |
| Peso [kg]: | 2,1 |

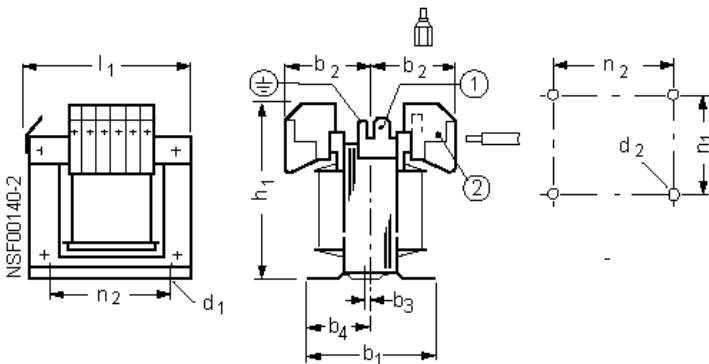
Conexión:

Regl. de bornas 1: 1-2-3-4-5-6-7

Regl. de bornas 2: 34-33-32-31

| Tipo | Tensión [V] | Bornas | Puentes de conexión |
|------|-------------|--------|---------------------|
| PR11 | 550 | 1-7 | - |
| | 525 | 2-7 | - |
| | 500 | 3-7 | - |
| | 480 | 1-6 | - |
| | 460 | 2-6 | - |
| | 440 | 3-6 | - |
| | 415 | 1-5 | - |
| | 400 | 2-5 | - |
| | 380 | 3-5 | - |
| | 230 | 2-4 | - |
| | 208 | 3-4 | - |
| SEC1 | 230 | 31-34 | 32-33 |
| | 115 | 31-34 | 31-32;33-34 |

Dimensiones / Taladros de montaje



(1) Conector plano DIN 46 244-A 6,3-0,8

(2) hasta 24 A: conexión por tornillo: un hilo 0,5 a 6 mm², hilo fino 0,5 a 4 mm², conector plano DIN 46 244-A 6,3-0,8

Dimensiones [mm]

| | | | | | |
|----|----|----|---------|----|----|
| b1 | 86 | d1 | 4,8x8,4 | n1 | 65 |
| b2 | 51 | d2 | M4 | n2 | 64 |
| b3 | 2 | h1 | 97 | | |
| b4 | 34 | l1 | 86 | | |