

Design of the product



Similar to image

Selective

RES.CURR. OP.CIRC. BR. SIQUENCE TYPE B SENS. TO. UNIV. CURRENT 63A 3+N-POL IFN 500MA 400V 4MW FOR SELECTIVE SWITCH OFF

Technical data:		
Supply voltage / for AC / rated value	V	400
Resistance against the impulse current / rated value	kA	5
Built in orientation		any
Ambient temperature	°C	-25 ... 45
Ambient temperature / during storage		
• minimum permissible	°C	-40
• maximum permissible	°C	75
Mechanical operating cycles as operating time / typical		10,000
Overvoltage class		III
Supply voltage / for testing equipment / minimum	V	150
Protection against electrical shock		Finger and back-of-hand safe
		top or bottom
Tightening torque		
• with screw-type terminals	N·m	2.5 ... 3
Section de conducteur raccordable		
• solid	mm ²	1.5 ... 25
• multibrin	mm ²	1.5 ... 25

Product feature		
• [not supplied - silicon-free]		Yes
• halogen-free		Yes
Number of test cycles / for environmental testing / in accordance with IEC 60068-2-30		28

Certificates/approvals:

General Product Approval

[ROSTEST](#)



Declaration of Conformity

[Manufacturer](#)

Further information:

Information- and Downloadcenter (Catalogs, Brochures,...)

<http://www.siemens.com/lowvoltage/catalogs>

Industry Mall (Online ordering system)

<http://www.siemens.com/lowvoltage/mall>

Service&Support (Manuals, Certificates, Characteristics, FAQs,...)

<http://support.automation.siemens.com/WW/view/en/5SM3746-5/all>

Image database (product images, 2D dimension drawings, 3D models, device circuit diagrams, ...)

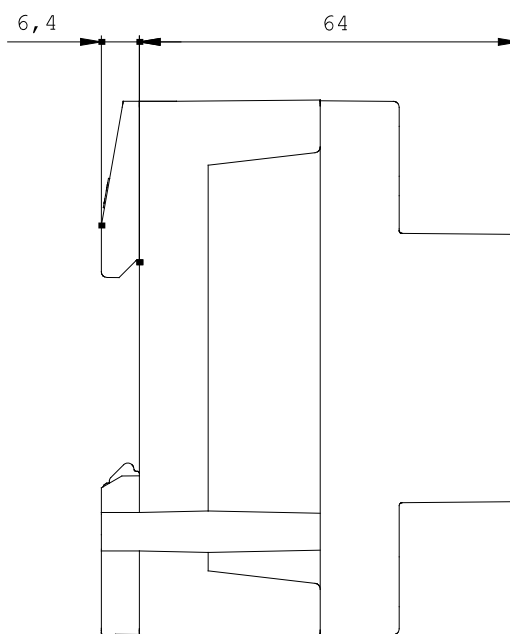
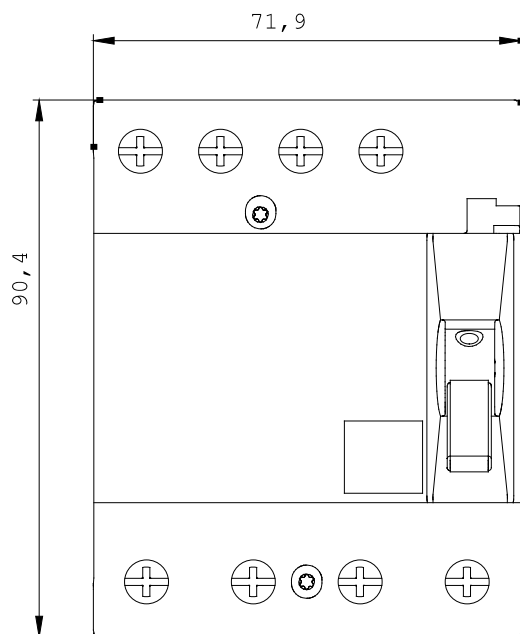
http://www.automation.siemens.com/bilddb/cax_en.aspx?mlfb=5SM3746-5

CAX-Online-Generator

<http://www.siemens.com/cax>

Tender specifications

[Datenorm GAEB81](#) [GAEB83](#) [RTF](#) [TXT](#)



last change:

Oct 31, 2011