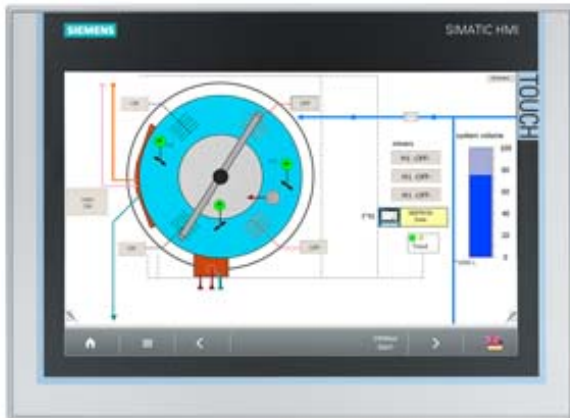


SIMATIC ITC1200, INDUSTRIAL THIN CLIENT, 12" WIDESCREEN-TFT-DISPLAY, TOUCH OPERATION, SUPPORTED PROTOCOLS: RDP, VNC, SMARTSERVER, WEB



Product type designation	
Display	
Screen diagonal	12.1 in
Display width	261.1 mm
Display height	163.2 mm
Type	TFT widescreen display, LED backlighting
Number of colors	16 777 216
Resolution (pixels)	
• Horizontal image resolution	1 280
• Vertical image resolution	800
General features	
• PDF reader	Yes
Backlighting	
• Backlighting (type)	LED, dimmable
• Dimmable backlight	Yes; 5-100 %
Control elements	
Mouse/cursor control	
• external mouse — USB	Yes

Keyboard	
<ul style="list-style-type: none"> external keyboard <ul style="list-style-type: none"> — USB 	Yes
Touch operation	
<ul style="list-style-type: none"> Design as touch screen 	Yes
<ul style="list-style-type: none"> Touch keyboard 	Yes
Installation type/mounting	
Built-in unit	Yes
Supply voltage	
Type of supply voltage	24 V DC
permissible range, lower limit (DC)	19.2 V
permissible range, upper limit (DC)	28.8 V
Input current	
Current consumption, max.	1.2 A
Inrush current A ² s	0.5 A ² s
Interfaces	
USB on the rear	2
USB at the front	0
Industrial Ethernet	
<ul style="list-style-type: none"> Transmission rate, max. 	1 000 Mbit/s
<ul style="list-style-type: none"> Number of industrial Ethernet interfaces 	1
Protocols	
Protocols (Ethernet)	
<ul style="list-style-type: none"> TCP/IP 	Yes
<ul style="list-style-type: none"> DHCP 	Yes
<ul style="list-style-type: none"> SNMP 	Yes
<ul style="list-style-type: none"> DCP 	Yes
<ul style="list-style-type: none"> LLDP 	Yes
WEB characteristics	
<ul style="list-style-type: none"> HTTP 	Yes
<ul style="list-style-type: none"> HTML 	Yes; HTML5
<ul style="list-style-type: none"> XML 	Yes
<ul style="list-style-type: none"> CSS 	Yes
<ul style="list-style-type: none"> JavaScript 	Yes
Protocols (terminal link)	
<ul style="list-style-type: none"> Sm@rtService 	Yes
<ul style="list-style-type: none"> RDP 	Yes
<ul style="list-style-type: none"> VNC viewer 	Yes
<ul style="list-style-type: none"> Citrix 	No
<ul style="list-style-type: none"> SINUMERIK 	Yes
Protocols	

PROFINET IO Device	
Services	
— PROFINET	No
Degree and class of protection	
IP65 at front	Yes
IP20 rear	Yes
Standards, approvals, certificates	
CE mark	Yes
KC approval	Yes
cULus	Yes
RCM (formerly C-TICK)	Yes
Use in hazardous areas	
• cULus Class I Zone 1	No
• cULus Class I Zone 2, Division 2	Yes; Available soon
• FM Class I Division 2	Yes; Available soon
Ambient conditions	
Min. ambient temperature	0 °C
Max. ambient temperature	50 °C
Storage/transport temperature	
• Min.	-20 °C
• max.	60 °C
Relative humidity	
• Relative humidity during operation	90 %
Software	
Web browser	Yes
Configuration	
Configuration	
• On-board	Yes
• Remote administration	Yes; With Remote Configuration Center (RCC) as of V2.0
Languages	
Online languages	
• German	Yes
• English	Yes
I/O / Options	
I/O devices	
• USB memory	Yes; USB storage medium can be connected
Mechanics/material	
Type of housing (front)	
• aluminum	Yes
Dimensions	

Width of the housing front	330 mm
Height of housing front	241 mm
Mounting cutout/device depth (W x H x T)	
• Mounting cutout, width	310 mm
• Mounting cutout, height	221 mm
Device depth	82 mm

Weights

Without packaging	3.4 kg
With packaging	4.1 kg
last modified:	11.11.2014