



FUSE LINK CLASS CC ACC. TO UL STANDARD 248-4  
SLOW-BLOW RATED CURRENT 20 A RATED VOLTAGE  
UP TO 600 V AC SIZE 10.3 MM X 38.1 MM

Similar to image

#### Technical data:

Color coding of the fuse link		others
Size of the fallback-system / acc. to DIN EN 60269-1		others
Operating voltage / rated value	V	600
Operating current / rated value	A	20
Rated breaking capacity	kA	200

#### Further information:

**Information- and Downloadcenter (Catalogs, Brochures,...)**

<http://www.siemens.com/lowvoltage/catalogs>

**Global Industry Mall (Online ordering system)**

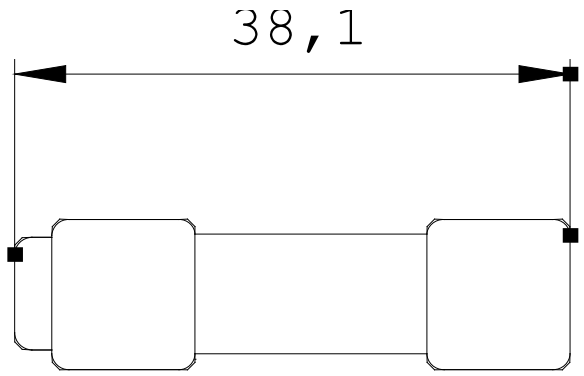
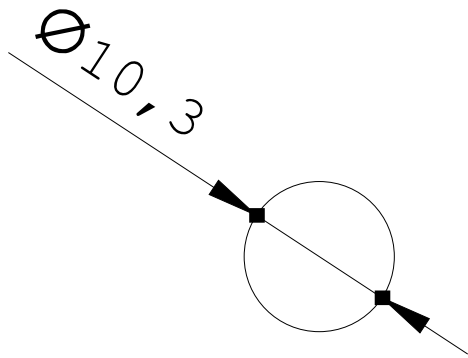
<http://www.siemens.com/lowvoltage/mall>

**Service&Support (Manuals, Certificates, Characteristics, FAQs,...)**

<http://support.automation.siemens.com/WW/view/en/3NW1200-0HG/all>

**Image database (product images, 2D dimension drawings, 3D models, device circuit diagrams, ...)**

[http://www.automation.siemens.com/bilddb/cax\\_en.aspx?mlfb=3NW1200-0HG](http://www.automation.siemens.com/bilddb/cax_en.aspx?mlfb=3NW1200-0HG)



last change:

Nov 22, 2010