

General information :

Construction regulation : 20 G 0965.0109 Customer : Elektro Spangler
 Type : singel-phase control transformer/rectifier Customer ID-number : --

Construction : vertical magnetic axis
 Surface : resin impregnation Connection : terminal block
 Rregulation : DIN EN 60742, VDE 0551, DIN EN 61558, Part 2-4 and 6, VDE 0570

Core section : EI 96 according to DIN 41302 T1 Material : V530-50
 Coil form : EI 96/56 1Ka/MS Material : Durethan BKV30H

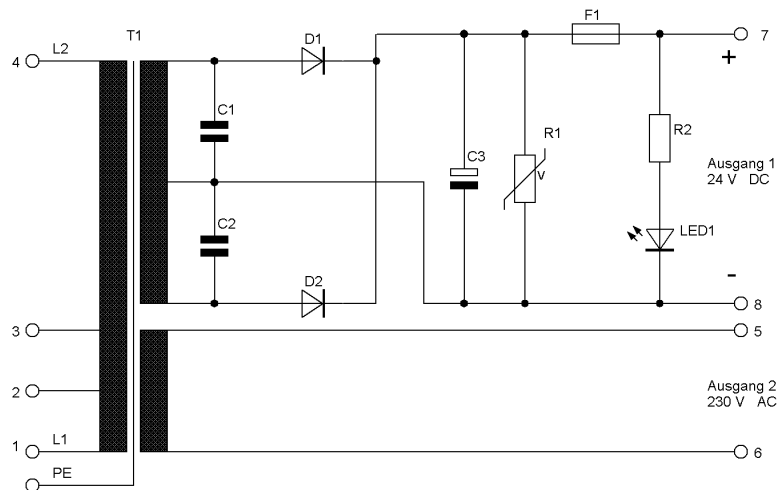
Electrical values :

Nominal input voltage V : 418-440-462	Nominal current A : 0,68-64-0,61
Nominal output voltage V : 230 AC	Nominal current A : 0,50 AC
Nominal output voltage V : 24 DC	Nominal current A : 5,0 DC
Nominal power AC kVA : 0,120	Nominal power DC kW: 0,120
Short time power kVA : --	Operation : DB
Frequency Hz : 50/60	Vector group : li0
Temperature class : T40/E	Percentage duty cycle : 100 %

Testing :

Type : individual testing
 according to regulation : VDE 0570 2-4, High voltage test according to VDE 0570 2-4
 No-load test : Voltages and Currents according to nominal values (see above)
 High voltage test : 5 kV; chassis to winding and primary winding to secondary winding, each 60 sec.

Circuit diagramm :



Terminal connecting diagramm :

Terminal.	1	2	3	4	5	6	7	8
Voltage	0	418	440	468	0	230 AC	0 +	24 DC -