

VEGAMET 625

Signal conditioning and indicating instrument for level sensors



Application area

The VEGAMET 625 signal conditioning instrument powers the connected 4 ... 20 mA/HART sensor, processes and displays the measured values received via HART multidrop. The VEGAMET 625 is ideal for simple control tasks in level, gauge, interface, differential and process pressure measurement. For inventory management in remote storage silos, interfaces for remote data transmission are integrated. Comprehensive adjustment functions allow individual adaptations to the respective application.

Your benefit

- Versatile use through three scalable current outputs for control of indicating instruments and connected systems such as e.g. PLCs
- Simple integration into the Intranet/Extranet via integrated web server
- Simple data recording and history retrieval via integrated measured value memory

Function

The VEGAMET 625 signal conditioning instrument powers two HART sensors and processes their measured values. Through an adjustment on the VEGAMET, these measured values can be individually scaled/linearised and transferred to downstream systems via the current outputs. Beside the graphic-capable indication there are three operating relays that serve as limit alarms for control tasks.

With instruments with optional interface, measured values can be retrieved via modem or network and indicated with the aid of a web browser or WEB-VV. In addition, it is possible to send a measured value or message via e-mail.

Technical data

Series Module unit with plug-in socket for mounting on carrier rail (35 x 7.5 according to DIN EN 50022/60715)

Connection terminals

- Type of terminal Screw terminal
- Max. wire cross-section 1.5 mm² (AWG 16)

Operating voltage 20 ... 253 V AC, 50/60 Hz, 20 ... 253 V DC

Max. power consumption 12 VA; 7.5 W

Sensor input

Number of sensors 2 x VEGA HART sensors

Type of input (selectable)

- Active input Sensor supply through VEGAMET 625
- Passive input Sensor has an own voltage supply

Measured value transmission

- HART multidrop protocol digital for VEGA HART sensors

Relay outputs

- Quantity 3 x operating relay, 1 x fail safe relay
- Turn-on voltage min. 10 mV DC, max. 250 V AC/DC
- Switching current min. 10 µA DC, max. 3 A AC, 1 A DC
- Breaking capacity min. 50 mW, max. 750 VA, max. 40 W DC (with U less than 40 V)

Current outputs

- Quantity 3 x outputs
- Range 0/4 ... 20 mA, 20 ... 0/4 mA
- Max. load 500 Ω

Ethernet interface (optional)

- Quantity 1 x, cannot be combined with RS232
- Data transmission 10/100 MBit

RS232 interface (optional)

- Quantity 1 x, cannot be combined with Ethernet

Measured value indication

- graphic-capable LC display (50 x 25 mm), with lighting digital and quasianalogue indication
- Max. indicating range -99999 ... 99999

LED displays

- Status operating voltage 1 x LED green
- Status fault signal 1 x LED red
- Status operating relay 1/2/3 3 x LED yellow
- Status interface 1 x LED green

Ambient temperature -20 ... +60 °C (-4 ... +140 °F)

Protection rating

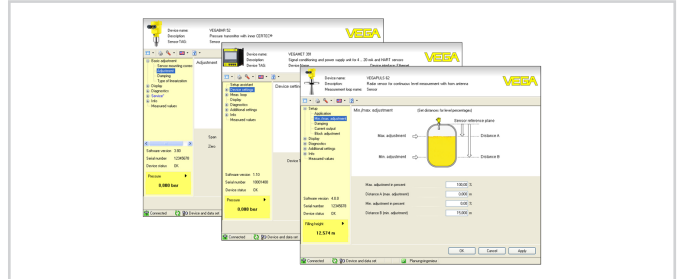
- Instrument IP 30
- Terminal socket IP 20

Approvals

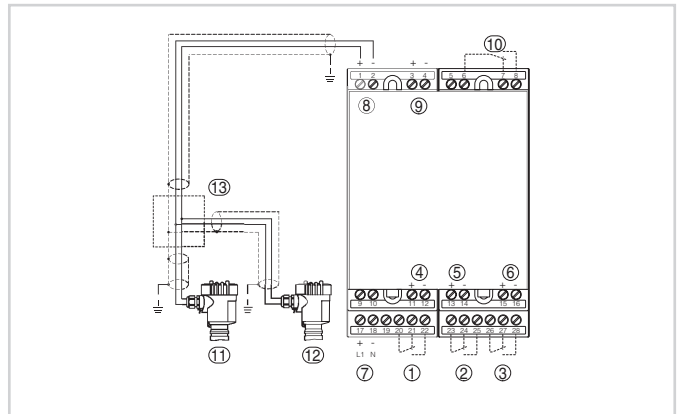
You can find detailed information on the existing approvals in the "configurator" on our homepage under www.vega.com/configurator.

Adjustment

The adjustment of VEGAMET 625 is menu-driven via four keys in the front and a clear, graphic-capable LC display with background lighting. As an alternative, parameter adjustment of the instrument is also possible via the adjustment software PACTware and the respective DTM.



Electrical connection

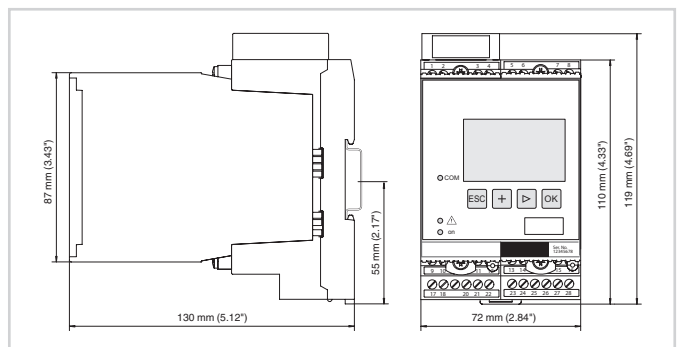


Connection VEGAMET 625 with two-wire sensors

- 1 Internal operating relay 1
- 2 Internal operating relay 2
- 3 Internal operating relay 3
- 4 Internal current output 1
- 5 Internal current output 2
- 6 Internal current output 3
- 7 Voltage supply of VEGAMET 625
- 8 Measurement data input with sensor supply (active input)
- 9 Measurement data input (passive input), not in Ex ia
- 10 Internal fail safe relay
- 11 HART two-wire sensor with Multidrop address 1
- 12 HART two-wire sensor with Multidrop address 2
- 13 Distributor

You can find details on electrical connection in the instrument operating instructions on our homepage at www.vega.com/downloads.

Dimensions



Info

You can find further information about the VEGA product line on our homepage www.vega.com.

In the download section under www.vega.com/downloads you'll find free operating instructions, product information, brochures, approval documents, instrument drawings and much, much more.

Contact

You can find the VEGA agency serving your area on our homepage www.vega.com.