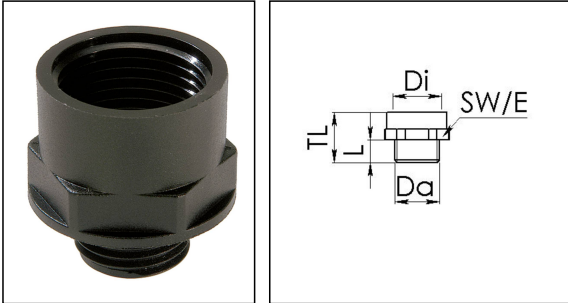


EX-KEM 32/40

Ex-enlargement adaptor, polyamide, M32-M40



Products may differ in size, colour and appearance to those shown. If you require further information or customisation, please contact us directly.



Material	Polyamide, fibre reinforced
Temp. range min	-40 °C
Temp. range max	75 °C
Protection class	IP66 / IP68 (5 bar 30 min)
Marking	II 2 D Ex tb IIIC Db, II 2 G Ex eb IIC Gb
Approval	PTB 04 ATEX 1040 X, IECEx PTB 16.0026X
Thread type outer	M
Ø outer thread	32
Lead outer	1,5
Length screw-in thread L	12 mm
Thread type inner	M
Ø inner thread	40
Lead inner	1,5
Length internal thread	15,5 mm
Key width SW	46 mm
Collar diameter (E)	51 mm
Total length TL	30 mm
Form	A
Order no. RAL 9005	10064745
Type	EX-KEM 32/40
Packing unit	50
ETIM-Classification	EC000938

Your Contact:

WISKA Hoppmann GmbH

Kisdorfer Weg 28 · 24568 Kaltenkirchen · Germany

☎ +49-4191-508-0 · 📠 +49-4191-508-209

contact@wiska.de · www.wiska.com

Recommended accessories

EMUG 32

10061784

24.09.2019

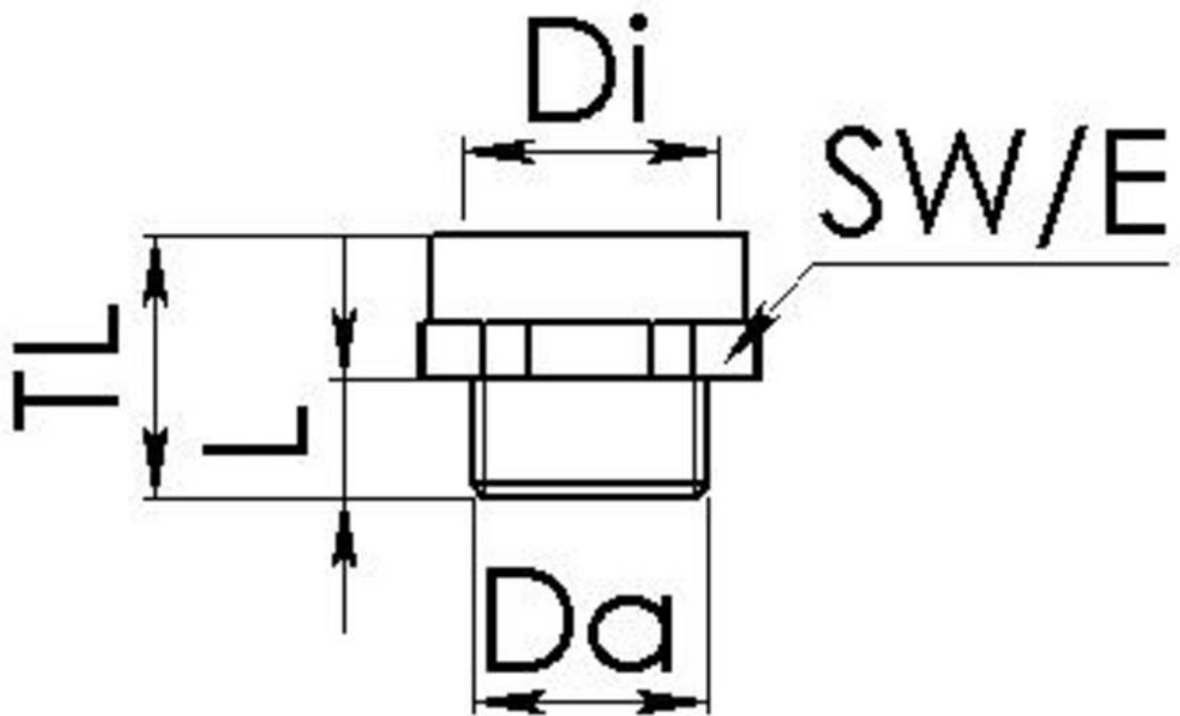
Your Contact:

WISKA Hoppmann GmbH

Kisdorfer Weg 28 · 24568 Kaltenkirchen · Germany

☎ +49-4191-508-0 · 📠 +49-4191-508-209

contact@wiska.de · www.wiska.com



Your Contact:

WISKA Hoppmann GmbH

Kisdorfer Weg 28 · 24568 Kaltenkirchen · Germany

☎ +49-4191-508-0 · 📠 +49-4191-508-209

contact@wiska.de · www.wiska.com