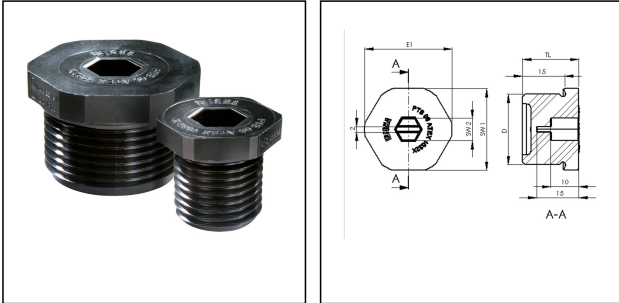


## EX-EVSG 20

EX stop end, polyamide, M20



Products may differ in size, colour and appearance to those shown. If you require further information or customisation, please contact us directly.



<b>Material</b>	Polyamide
<b>Material sealing gasket</b>	EPDM
<b>Temp. range min</b>	-40 °C
<b>Temp. range max</b>	75 °C
<b>Protection class</b>	IP66 / IP68 (5 bar 30 min)
<b>Product Color</b>	RAL 9005
<b>Marking</b>	II 2 D Ex tb IIIC Db, II 2 G Ex eb IIC Gb
<b>Approval</b>	IECEX PTB 16.0025X, PTB 06 ATEX 1032 X
<b>Thread type</b>	M
<b>Ø Connection thread D</b>	20
<b>Lead</b>	1,5
<b>Length screw-in thread L</b>	15 mm
<b>Key width SW1</b>	24 mm
<b>Key width SW2</b>	8 mm
<b>Collar diameter E1</b>	26 mm
<b>Collar diameter E2</b>	9 mm
<b>Total length TL</b>	19 mm
<b>Order no. RAL 9005</b>	10065302
<b>Type</b>	EX-EVSG 20
<b>Packing unit</b>	100
<b>ETIM-Classification</b>	EC000032

### Recommended accessories

Your Contact:

WISKA Hoppmann GmbH

Kisdorfer Weg 28 · 24568 Kaltenkirchen · Germany

☎ +49-4191-508-0 · 📠 +49-4191-508-209

contact@wiska.de · www.wiska.com

24.09.2019

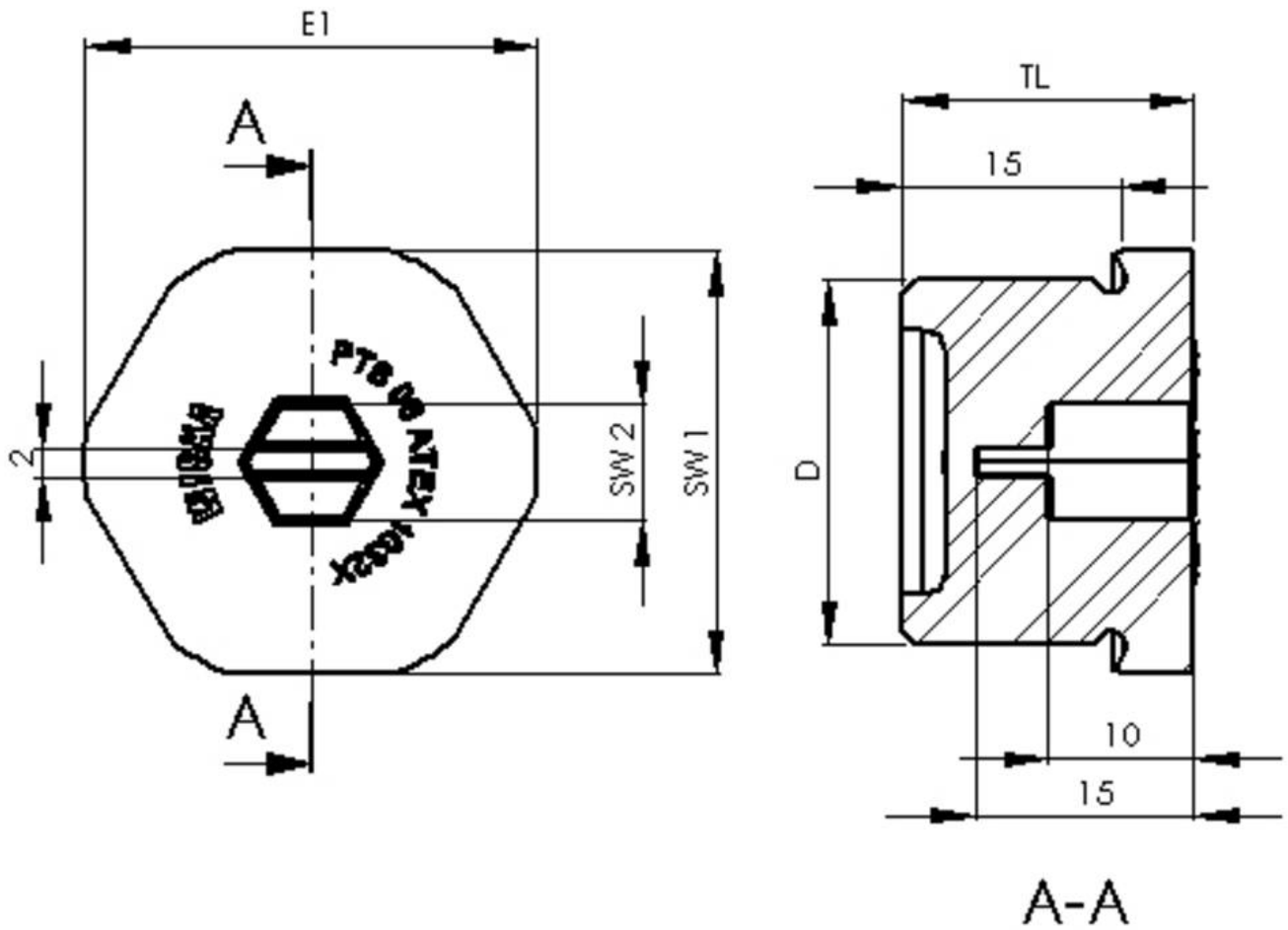
Your Contact:

**WISKA Hoppmann GmbH**

Kisdorfer Weg 28 · 24568 Kaltenkirchen · Germany

☎ +49-4191-508-0 · 📠 +49-4191-508-209

contact@wiska.de · www.wiska.com



Your Contact:

**WISKA Hoppmann GmbH**

Kisdorfer Weg 28 · 24568 Kaltenkirchen · Germany

☎ +49-4191-508-0 · 📠 +49-4191-508-209

contact@wiska.de · www.wiska.com