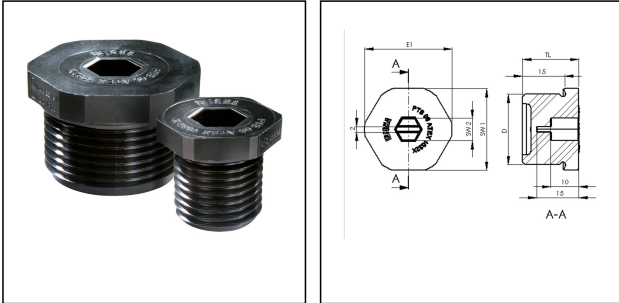


EX-EVSG 40

EX stop end, polyamide, M40



Products may differ in size, colour and appearance to those shown. If you require further information or customisation, please contact us directly.



Material	Polyamide
Material sealing gasket	EPDM
Temp. range min	-40 °C
Temp. range max	75 °C
Protection class	IP66 / IP68 (5 bar 30 min)
Product Color	RAL 9005
Marking	II 2 D Ex tb IIIC Db, II 2 G Ex eb IIC Gb
Approval	IECEX PTB 16.0025X, PTB 06 ATEX 1032 X
Thread type	M
Ø Connection thread D	40
Lead	1,5
Length screw-in thread L	15 mm
Key width SW1	46 mm
Key width SW2	8 mm
Collar diameter E1	50 mm
Collar diameter E2	9 mm
Total length TL	20 mm
Order no. RAL 9005	10065305
Type	EX-EVSG 40
Packing unit	30
ETIM-Classification	EC000032

Recommended accessories

Your Contact:

WISKA Hoppmann GmbH

Kisdorfer Weg 28 · 24568 Kaltenkirchen · Germany

☎ +49-4191-508-0 · 📠 +49-4191-508-209

contact@wiska.de · www.wiska.com

24.09.2019

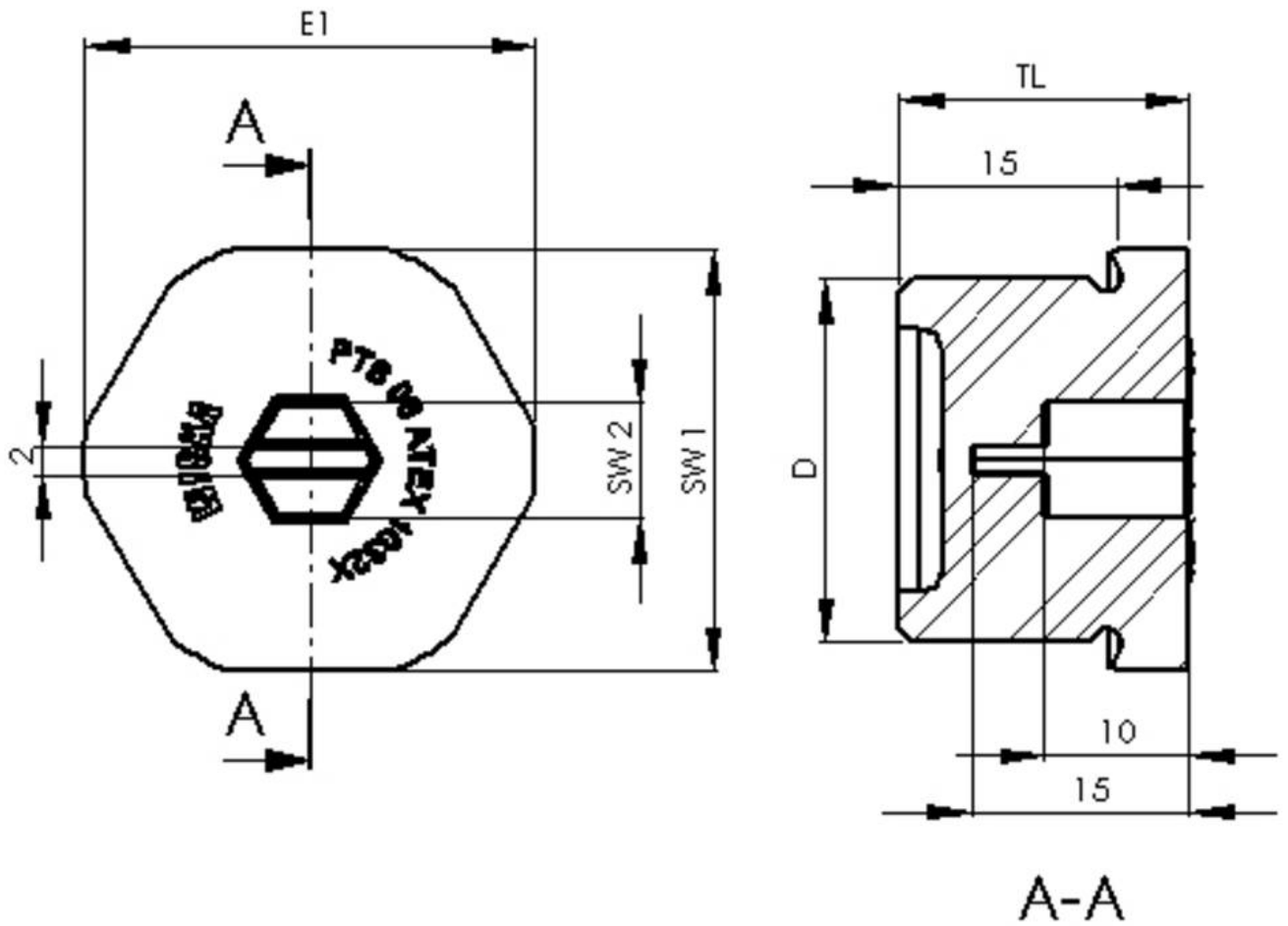
Your Contact:

WISKA Hoppmann GmbH

Kisdorfer Weg 28 · 24568 Kaltenkirchen · Germany

☎ +49-4191-508-0 · 📠 +49-4191-508-209

contact@wiska.de · www.wiska.com



Your Contact:

WISKA Hoppmann GmbH

Kisdorfer Weg 28 · 24568 Kaltenkirchen · Germany

☎ +49-4191-508-0 · 📠 +49-4191-508-209

✉ contact@wiska.de · 🌐 www.wiska.com