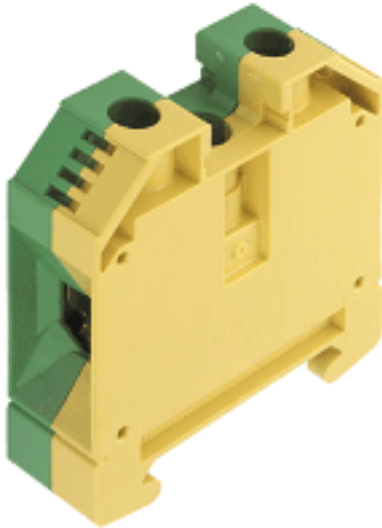


**W-series terminal with clamping yoke connection
WPE 35**

Weidmüller Interface GmbH & Co. KG
Klingenbergstraße 16
D-32758 Detmold
Germany
Fon: +49 5231 14-0
Fax: +49 5231 14-2083
www.weidmueller.com



The PE terminals are available in two types, standard and compact (N), with rated cross-sections from 1.5 mm² to 150 mm² (e.g. 2.5 mm² - WPE 2.5, or 4 mm² - WPE 4N).

General ordering data

Order No.	1010500000
Part designation	WPE 35
Version	W-series terminal with clamping yoke connection, Earth terminal, Rated cross-section: 35 mm ² , Direct mounting
GTIN (EAN)	4008190112806
Qty.	25 pc(s).

**W-series terminal with clamping yoke connection
WPE 35**

Weidmüller Interface GmbH & Co. KG
Klingenbergstraße 16
D-32758 Detmold
Germany
Fon: +49 5231 14-0
Fax: +49 5231 14-2083
www.weidmueller.com

Technical data

Dimensions

Length	56 mm	Width	16 mm
Height of lowest version	63 mm	Weight	82.84 g

Temperature

Ambient temperature (operational)	Storage temperature
-----------------------------------	---------------------

CSA ratings data

Certificate no.	200039-1352963	Conductor cross-section, max.	2 AWG
Conductor cross-section, min.	12 AWG		

UL ratings data

Certificate no.	E60693VOL1SEC38	Conductor size Factory wiring, max	2 AWG
Conductor size Factory wiring, min	12 AWG	Conductor size Field wiring, max	2 AWG

IECEX/ATEX rating data

Certificate no.	KEMA98ATEX1683U	ATEX certificate	KEMA98ATEX1683U_d.pdf
ATEX certificate	KEMA98ATEX1683U_e.pdf	Certificate no.	IECEXULD05.0008U
IEC Ex certificate	IECEXULD05.0008U_e.pdf	Conductor cross-section, max.	35 mm ²
Conductor cross-section, max.	35 mm ²	Voltage when using cross-connections	CrossConnectionGuide.pdf
Operating temperature range	For operating temperature range see EC Design Test Certificate / IEC Ex-Certificate of Conformity	Marking EN 60079-7	Ex e II

Material data

Material	Wemid	Colour	yellow green
Flammability class UL 94	V-0		

System specifications

Product family	W-series terminal with clamping yoke connection	Connection direction	on side
Number of levels	1	No. of connections	2
No. of clamping points per level	2	Levels cross-connected internally	No
Mounting rail	TS 35	End cover plate required	No

Additional technical data

Explosion-tested version	Yes	Installation advice	Direct mounting
Number of identical terminals	1	Open sides	closed
Type of mounting	Screwed		

**W-series terminal with clamping yoke connection
WPE 35**

Weidmüller Interface GmbH & Co. KG
Klingenbergstraße 16
D-32758 Detmold
Germany
Fon: +49 5231 14-0
Fax: +49 5231 14-2083
www.weidmueller.com

Technical data

Conductors for clamping (rated connection)

Stripping length	18 mm	Connection direction	on side
No. of connections	2	Clamping range, min.	2.5 mm ²
Clamping range, max.	50 mm ²	Gauge to IEC 60947-1	B8
Conductor cross-section, solid, min.	2.5 mm ²	Conductor cross-section, solid, max.	16 mm ²
Stranded, min.	2.5 mm ²	Stranded, max.	50 mm ²
Conductor cross-section, flexible, max.	35 mm ²	Conductor cross-section, flexible plus plastic collar DIN 46228/1, rated connection, min.	2.5 mm ²
Conductor cross-section, flexible plus plastic collar DIN 46228/1, rated connection, max.	35 mm ²	Conductor cross-section, flexible AEH plus plastic collar DIN 46228/4, rated connection, min.	2.5 mm ²
Conductor cross-section, flexible AEH plus plastic collar DIN 46228/4, rated connection, max.	35 mm ²		

Rating data

Rated cross-section	35 mm ²	Standards	IEC 60947-7-2
Pollution severity	3		

Sizes

TS 35 offset	32 mm
--------------	-------

Approvals

Approvals institutes	BURVER; CSA; CSAEX; CURUSEX; DETNORVER; GERMLLOYD; GOSTEX; GOSTME25; IECEXULD; KEMAATEX; KEMAKEUR; LLOYDSREG; MARITREG; NEMKO; RINA; UR; CE; ROHS
----------------------	--

Classifications

ETIM 2.0	EC000901	ETIM 3.0	EC000901
UNSPSC	30-21-18-11	eClass 4.1	27-14-03-05
eClass 5.1	27-14-03-05	eClass 6.0	27-14-03-05

Product notes

Note, accessories	Rail support for insulated installation of terminal rail "SH 2" order no. 0494920000 (10 pcs)
Product description	Identically contoured design of 2.5 to 10 mm ² with identical end plates and partitions. An unmatched combination of many advantages! The compact terminals are impressive for their small size and rated cross-section capacity.

Downloads

DXF	09238_WPE_35_DXF.dxf
STEP	1010500000_09238_WPE_35_STP.stp
3D model	

Datasheet

**W-series terminal with clamping yoke connection
WPE 35**

Weidmüller Interface GmbH & Co. KG
Klingenbergstraße 16
D-32758 Detmold
Germany
Fon: +49 5231 14-0
Fax: +49 5231 14-2083
www.weidmueller.com

Drawings

