

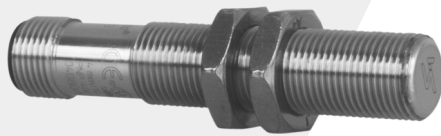
# Inductive Full-Metal Switch

## Full-Metal Housing



# IB040DE65UB3

Part Number

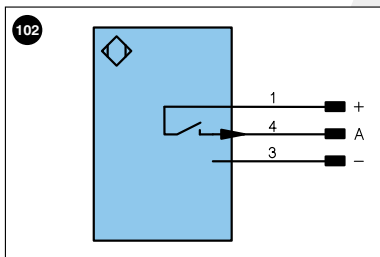
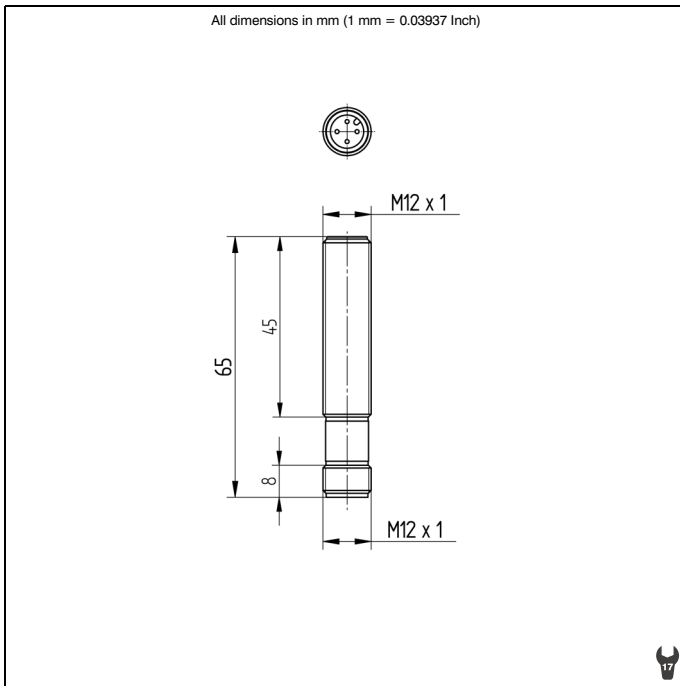


## Technical Data

Inductive Data	
Switching Distance	4 mm
Correction Factors V2A / Brass / Al	0,82/0,35/0,32
Mounting	flush
Mounting A/B/C/D in mm	0/20/12/0
Mounting A/B/C/D (V2A) in mm	0/20/12/0
Switching Hysteresis	< 15 %
Electrical Data	
Supply Voltage	10...30 V DC
Current Consumption (U <sub>b</sub> = 24V)	< 15 mA
Switching Frequency	500 Hz
Temperature Drift	< 10 %
Temperature Range	-25...80 °C
Switching Output Voltage Drop	< 2,5 V
Switching Output / Switching Current	400 mA
Residual Current Switching Output	< 100 µA
Short Circuit Protection	yes
Reverse Polarity and Overload Protection	yes
Mechanical Data	
Housing	Stainless Steel 316L
Full Encapsulation	yes
Degree of Protection	IP68 / IP69K
Connection	M12 x 1
Protective Insulation, Rated Voltage	50 V
Mechanical Strength Sensor Area	60 bar
Ex II 3G Ex nA II T5 X	yes
Ex II 3D Ex tD A22 IP6X T90°C X	yes
Stock Type	●
PNP NO	●
Connection Diagram No.	102
Suiting Connection Technology No.	2
Suiting Mounting Technology No.	470

Housing: Stainless Steel V4A 1.4404, 316L



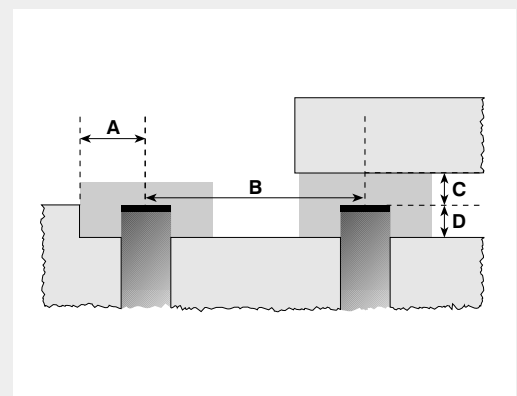


Legend			
+	Supply Voltage +	U	Test Input
-	Supply Voltage 0V	Ū	Test Input inverted
~	Supply Voltage (AC Voltage)	W	Trigger Input
A	Switching Output (1,2,3...)/NO	O	Analog Output
Ā	Switching Output (1,2,3...)/NC	O-	Ground for the Analog Output
V	Contamination/Error Output (NO)	BZ	Block Discharge
V̄	Contamination/Error Output (NC)	AwV	Valve Output
E	Input (analog or digital)	a	Valve Control Output +
T	Teach Input	b	Valve Control Output 0V
Z	Time Delay (activation)	SY	Synchronization
S	Shielding	E+	Receiver-Line
RxD	RS-232 Receive Path	S+	Emitter-Line
TxD	RS-232 Send Path	±	Grounding
RDY	Ready	SnR	Switching Distance Reduction
GND	Ground	USBD+	USB data +
CL	Clock	USBD-	USB data -
E/A	Output/Input programmable	Bus	Interfaces-Bus A(+)/B(-)
	IO-Link	La	Emitted Light disengageable

Wire Colors according to DIN IEC 757	
BK	Black
BN	Brown
RD	Red
OG	Orange
YE	Yellow
GN	Green
BU	Blue
VT	Violet
GY	Grey
WH	White
PK	Pink
GNYE	Green Yellow

### Mounting



### Complimentary Products

Protection Clip Z0007