

Example of a identification label:

WISA Model 300
* Type: 303.015.603.1
* BR: 102
V: 240 V/50 Hz
Con: 20 059.61.5.502
* No: C 165 132
CC: 872.723
Date: 4/83
Made in West Germany

Model range
 Type reference
 Special building regulation
 Operating voltage / frequency
 WISA No.
 Serial No.
 Customer reference
 Date of manufacture

When ordering spares or writing to us with a query, please supply all the information on the identification label whenever possible, but never less than the particulars marked *. This is particularly important when the type reference includes a . . 9" - our code for special custom-built pumps.

Removal of the identification label from the pump cancels all warranty and liability rights. In addition, the supply of the correct spare parts becomes difficult.

3.0 Installation of the pump

3.1 Positioning

WISA pumps with plastic or aluminium casing are generally supplied with rubber feet. It is sufficient for this type to be placed horizontally on a firm and level base. Pumps subjected to critical load conditions can cause the table top to resonate or, alternatively, the pumps may start to wander. To rectify this rare phenomenon, place a thick piece of foam between pump and table top.

3.2 Mounting positions

Important remarks: Pump must be installed horizontal. If only a vertical position is possible, the vibrating armature must hang vertically like a pendulum. No other installation position is recommended. (See also for the installation positions in the catalogue.)

3.2.1 Without casing (pumps supplied with suction nozzle)

A direct screw connection between the baseplate and a chassis plate is advisable only if a high level of resonant noise can be tolerated.

In these cases the pump should be screwed down at one end only, using two screws. This avoids any distortion of the pump's baseplate.

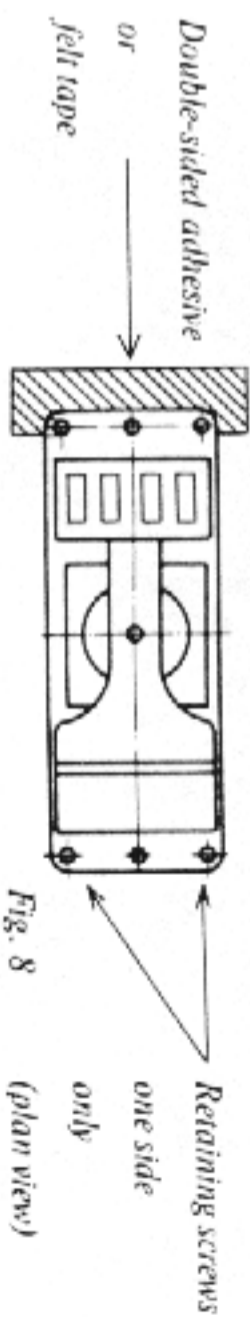


Fig. 8 (plan view)

Antivibration mounts should be used whenever a pump is installed in sensitive measuring equipment:

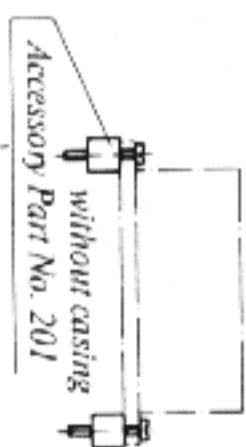


Fig. 9

Horizontal installation using antivibration mounts

Three or four antivibration mounts (with casing) - our accessory part No. 201 - are required. These antivibration mounts should only be loaded in a vertical direction; never used in shear.

Vertical installation of the pump using antivibration mounts is not permitted.

Recommended method of installation:

With WISA suspension system including safety stops. horizontal:

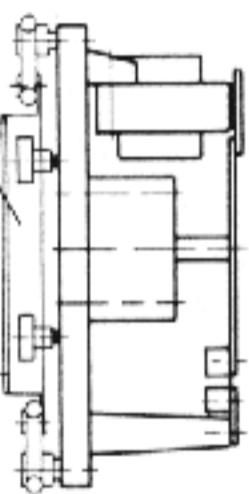
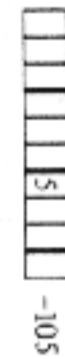
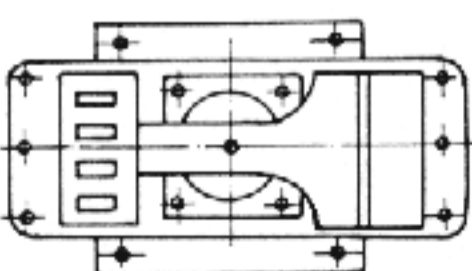


Fig. 10

with safety stops (105)



vertical:



This method of installation must be indicated when ordering the pump. The pump is suspended from 4 rubber rings. The suspension system is tuned to about 20-25 Hz; it is not suitable for severe vibration loading (e.g. shock load testing). In such cases the customer must secure the pump for shock load testing.